

# PRODUCT MONOGRAPH

Pr**PATANOL**<sup>®</sup>

Olopatadine Hydrochloride Ophthalmic Solution  
0.1% w/v olopatadine (as olopatadine hydrochloride)

Anti-allergy Agent

Novartis Pharmaceuticals Canada Inc.  
700 Saint-Hubert St., suite 100  
Montreal, Quebec  
H2Y 0C1  
www.novartis.ca

Date of Revision:  
March 2, 2018

Novartis version:  
March 5, 2024

Control Number: 211652

PATANOL is a registered trademark.

\*All trademarks and registered trademarks are the property of their respective owners.

## Table of Contents

<b>PART I: HEALTH PROFESSIONAL INFORMATION.....</b>	<b>3</b>
SUMMARY PRODUCT INFORMATION .....	3
INDICATIONS AND CLINICAL USE.....	3
CONTRAINDICATIONS .....	3
WARNINGS AND PRECAUTIONS.....	3
ADVERSE REACTIONS.....	5
DRUG INTERACTIONS .....	6
DOSAGE AND ADMINISTRATION .....	6
OVERDOSAGE .....	6
ACTION AND CLINICAL PHARMACOLOGY .....	6
STORAGE AND STABILITY .....	8
DOSAGE FORMS, COMPOSITION AND PACKAGING .....	8
<b>PART II: SCIENTIFIC INFORMATION .....</b>	<b>9</b>
PHARMACEUTICAL INFORMATION.....	9
CLINICAL TRIALS.....	10
DETAILED PHARMACOLOGY .....	12
TOXICOLOGY .....	13
REFERENCES .....	14
<b>PART III: CONSUMER INFORMATION.....</b>	<b>16</b>

# PATANOL®

Olopatadine Hydrochloride Ophthalmic Solution

## PART I: HEALTH PROFESSIONAL INFORMATION

### SUMMARY PRODUCT INFORMATION

Route of Administration	Dosage Form / Strength	Clinically Relevant Nonmedicinal Ingredients
Topical Ophthalmic	Ophthalmic Solution/ 0.1% w/v olopatadine (as olopatadine hydrochloride)	Preservative: benzalkonium chloride Non-medicinal ingredients: dibasic sodium phosphate, hydrochloric acid and/or sodium hydroxide (to adjust pH), purified water, sodium chloride

### INDICATIONS AND CLINICAL USE

PATANOL® (olopatadine hydrochloride ophthalmic solution) is indicated for the treatment of allergic conjunctivitis.

**Geriatrics:** No overall difference in safety has been observed between elderly and other adult patients.

**Pediatrics (3 – 16 years of age):** PATANOL administered three times a day for six weeks was shown to be safe and well-tolerated in subjects who were ages 3 years and older.

### CONTRAINDICATIONS

Patients who are hypersensitive to this drug or to any ingredient in the formulation or component of the container. For a complete listing, see Dosage Forms, Composition and Packaging section of the Product Monograph.

### WARNINGS AND PRECAUTIONS

#### **General**

For topical ocular use only. Not for injection or oral use.

As with any eye drop, to prevent contamination of the dropper tip and solution, care should be taken not to touch the eyelids or surrounding areas with the dropper tip of the bottle. Keep bottle tightly closed when not in use.

Patients should be advised not to wear contact lenses if their eye(s) are red.

The preservative in PATANOL, benzalkonium chloride, may cause eye irritation and is known to discolour soft contact lenses. Contact with soft contact lenses should be avoided. Patients must be instructed to remove contact lenses prior to application of PATANOL, and wait at least 15 minutes before they insert their contact lenses.

If using other eye drops, patients should wait at least 5 minutes between putting in PATANOL and the other drops. Eye ointments should be applied last.

### **Driving and Using Machinery**

Olopatadine is a non-sedating anti-histamine. Temporary blurred vision or other visual disturbances, after the use of PATANOL, may affect the ability to drive or use machines. If blurred vision occurs after instillation, patients must wait until vision clears before driving or using machinery.

### **Carcinogenesis and Mutagenesis**

Please refer to animal data in TOXICOLOGY section.

### **Sexual Function/Reproduction**

Studies have not been performed to evaluate the effect of topical ocular administration of olopatadine on human fertility. Olopatadine administered to male and female rats at oral doses of 62,500 times the maximum recommended ocular human use level resulted in a slight decrease in the fertility index and reduced implantation rate; no effects on reproductive function were observed at doses of 7,800 times the maximum recommended ocular human use level.

### **Special Populations**

#### **Pregnant Women:**

There are no adequate and well controlled studies in pregnant women. Studies in animals with olopatadine have shown reproductive toxicity following systemic administration considered sufficiently in excess of the maximum human exposure. Olopatadine was found not to be teratogenic in rats and rabbits at oral doses >90,000 and >60,000 times the maximum recommended ocular human use level, respectively. Because animal studies are not always predictive of human responses, this drug should be used in pregnant women only if the potential benefit to the mother justifies the potential risk to the embryo or fetus.

#### **Nursing Women:**

Olopatadine has been identified in the milk of nursing rats following oral administration. Rat pups of mothers administered olopatadine orally at greater than 625 times (but not at 312 times)

the maximum recommended ocular human use level demonstrated reduced body weight gain during the nursing period. It is not known whether topical ocular administration could result in sufficient systemic absorption to produce detectable quantities in human breast milk. Nevertheless, caution should be exercised when PATANOL is administered to a nursing mother.

**Geriatrics:** No overall difference in safety has been observed between elderly and other adult patients.

**Pediatrics (3 – 16 years of age):** The safety and effectiveness of PATANOL have been established in pediatric patients between 3 and 16 years of age.

## **ADVERSE REACTIONS**

### **Adverse Drug Reaction Overview**

In clinical studies of PATANOL, ocular and non-ocular adverse reactions related to therapy were reported at an incidence below 1%.

### **Clinical Trial Adverse Drug Reactions**

*Because clinical trials are conducted under very specific conditions the adverse reaction rates observed in the clinical trials may not reflect the rates observed in practice and should not be compared to the rates in the clinical trials of another drug. Adverse drug reaction information from clinical trials is useful for identifying drug-related adverse events and for approximating rates.*

### **Less Common Clinical Trial Adverse Drug Reactions**

**Ocular:** ocular discomfort (including mild transient burning or stinging and foreign body sensation), eye pruritis, ocular hyperemia, superficial keratitis, eyelid edema, dry eye, eyelid dryness, eyelid spasm, photophobia.

**Non-ocular:** asthenia, headache, dysgeusia.

### **Post-Market Adverse Drug Reactions**

Approximately 30.5 million units of PATANOL have been sold in 69 countries. The reporting rate of all reaction terms reported between 01 January 1997 and 31 December 2004 was 0.004%, and no single reaction term occurred with a reporting rate greater than 0.0007%.

There were no new major findings bearing on the established overall safety profile of PATANOL.

Adverse drug reactions identified from post-marketing experience that have not been reported previously in the above-mentioned clinical trials with PATANOL include: dizziness, eye pain, eye discharge, eyelid margin crusting, vision blurred, punctate keratitis, keratitis, erythema of

eyelid, nasal dryness, dry mouth, dermatitis contact, fatigue, hypersensitivity, lacrimation increased and nausea.

## **DRUG INTERACTIONS**

No clinical interaction studies have been conducted with PATANOL. *In vitro* studies have shown that olopatadine does not inhibit metabolic reactions which involve cytochrome P-450 isoenzymes 1A2, 2C8, 2C9, 2C19, 2D6, 2E1 and 3A4. Olopatadine is moderately bound to plasma proteins (approximately 55%). These results indicate that olopatadine is unlikely to result in interactions with other concomitantly administered medications. Due to the low systemic exposure following topical ocular dosing, it is unlikely that PATANOL would interfere with immediate hypersensitivity skin testing.

Interactions with other drugs, food, herbal products or laboratory tests have not been established.

## **DOSAGE AND ADMINISTRATION**

### **Recommended Dose and Dosage Adjustment**

The recommended dose is one to two drops in each affected eye twice daily. No dosage adjustment is required in hepatic or renal impairment.

### **Missed Dose**

If a dose is missed, a single drop should be taken as soon as possible before reverting to regular routine. Do not use a double dose to make up for the one missed.

## **OVERDOSAGE**

**For management of suspected drug overdose, consult your regional poison control centre.**

A topical overdosage may be flushed from the eye(s) with warm tap water.

## **ACTION AND CLINICAL PHARMACOLOGY**

### **Mechanism of Action**

Olopatadine, a structural analog of doxepin, is a non-steroidal, non-sedating, topically effective anti-allergic molecule that exerts its effects through multiple distinct mechanisms of action. Olopatadine is a mast cell stabilizer and a potent, selective histamine H<sub>1</sub> antagonist (9, 11) that inhibits the *in vivo* type 1 immediate hypersensitivity reaction (12). Olopatadine inhibits the release of mast cell inflammatory mediators [i.e., histamine, tryptase, prostaglandin D<sub>2</sub> and TNF $\alpha$  (4,9,11,12)] as demonstrated in *in vitro* studies and confirmed in patients (7). Olopatadine

is also an inhibitor of pro-inflammatory cytokine secretion from human conjunctival epithelial cells (13).

### **Pharmacodynamics**

#### **Effects on cardiac repolarization (QTc):**

In two placebo-controlled, two-way crossover cardiac repolarization studies, no signal of QT interval prolongation was observed relative to placebo following twice daily 5 mg oral doses for 2.5 days in 102 healthy volunteers, or following twice daily 20 mg oral doses for 13.5 days in 32 healthy volunteers. In addition, no evidence of QT interval prolongation was observed, relative to placebo, in 429 perennial allergic rhinitis patients given PATANOL (olopatadine hydrochloride) Nasal Spray, 665 micrograms twice daily for up to 1 year.

### **Pharmacokinetics**

Following topical ocular administration in man, olopatadine was shown to have low systemic exposure. Two studies in normal volunteers (totalling 24 subjects) dosed bilaterally with Olopatadine 0.15% ophthalmic solution once every 12 hours for 2 weeks demonstrated plasma concentrations to be generally below the quantitation limit of the assay (<0.5 ng/mL). The half-life in plasma was 7-14 hours, and elimination was predominantly through renal excretion. Approximately 60-70% of the dose was recovered in the urine as parent drug.

### **Special Populations and Conditions**

**Pediatrics:** PATANOL administered three times a day for six weeks was shown to be safe and well tolerated in subjects who were 3 years and older.

**Geriatrics:** No overall differences in safety and effectiveness have been observed between elderly and other adult patients.

**Gender:** No specific pharmacokinetic study examining the effect of gender was conducted.

**Race:** No specific pharmacokinetic study examining the effect of race was conducted.

**Hepatic Insufficiency:** No specific pharmacokinetic study examining the effect of hepatic impairment was conducted. Since metabolism of olopatadine is a minor route of elimination, no adjustment of the dosing regimen of Olopatadine Hydrochloride Ophthalmic Solution, 0.1% is warranted in patients with hepatic impairment.

**Renal Insufficiency:** The mean plasma  $C_{max}$  values for olopatadine following single intranasal doses of olopatadine HCl nasal spray 0.6% (665 µg/spray) were not markedly different between healthy subjects (18.1 ng/mL) and patients with mild, moderate and severe renal impairment (range 15.5 to 21.6 ng/mL). Plasma AUC was 2.5-fold higher in patients with severe impairment (creatinine clearance <30 mL/min/1.73m<sup>2</sup>). Predicted peak steady-state plasma concentrations of olopatadine in patients with renal impairment following administration of Olopatadine Hydrochloride Ophthalmic Solution, 0.1% are at least 10-fold lower than those observed following administration of olopatadine nasal spray 0.6%, and approximately 300-fold lower

than those observed following the safe and well-tolerated administration of 20 mg oral doses for 13.5 days. These findings indicate that no adjustment of the dosing regimen of Olopatadine Hydrochloride Ophthalmic Solution, 0.1% is warranted in patients with renal impairment.

#### **STORAGE AND STABILITY**

Store at 4° - 30°C. Discard the container at the end of treatment. Keep out of the reach and sight of children.

#### **DOSAGE FORMS, COMPOSITION AND PACKAGING**

PATANOL is available in plastic dispenser containing 5 mL, 10 mL or 15 mL.

Each mL of PATANOL contains: **Medicinal ingredient:** 1.11 mg olopatadine hydrochloride equivalent to 1 mg olopatadine. **Preservative:** benzalkonium chloride 0.01%. **Non-medicinal ingredients:** sodium chloride, dibasic sodium phosphate, hydrochloric acid/sodium hydroxide (adjust pH), and purified water.

PATANOL has a pH of approximately 7 and an osmolality of approximately 300 mOsm/kg.

Tamper evidence is provided by a closure with an extended skirt that locks to the bottle finish on application and breaks away from the closure on opening. After cap is removed, if tamper evident snap collar is loose, remove before using product.



## PART II: SCIENTIFIC INFORMATION

### PHARMACEUTICAL INFORMATION

#### Drug Substance

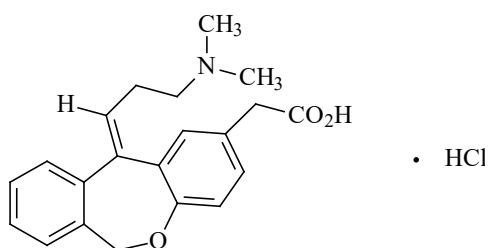
Proper name: Olopatadine hydrochloride

Chemical name:

- (1) Dibenz[*b,e*]oxepin-2-acetic acid, 11-[3-(dimethylamino)propylidene]-6,11-dihydro-, hydrochloride, (*Z*)-
- (2) 11-[(*Z*)-3-(Dimethylamino)propylidene]-6,11-dihydrodibenz[*b,e*]oxepin-2-acetic acid, hydrochloride

Molecular formula and molecular mass:  $C_{21}H_{23}NO_3 \cdot HCl$ ; 373.88

Structural formula:



Description: White, crystalline powder

Solubility: Sparingly soluble in methanol and water. Insoluble in chloroform.

pH (1% aqueous solution): 2.5

## CLINICAL TRIALS

### Study demographics and trial design

**Table 1: Summary of trial design and patient demographics for clinical trials.**

Study #	Trial design	Dosage, route of administration and duration	Study subjects (n=number)	Mean age (Range)	Gender
C-94-10	Randomized, double masked, placebo controlled, parallel group	Placebo, 0.01%, 0.05%, 0.1% and 0.15%; one ophthalmic drop 27 min., 6h and 8h prior to allergen challenge; 5 weeks.	98	37 years (18 – 64 yrs)	49 M 49 F
C-94-58	Triple masked, placebo controlled, randomized, contralateral eye comparison study.	Placebo, 0.05% and 0.1%; topical ocular administration; 4 weeks	60	46 years (18 – 72 yrs)	29 M 31 F
C-94-39	Triple masked, placebo controlled, randomized, contralateral eye comparison study.	Placebo, 0.05% and 0.1%; topical ocular administration; 4 weeks	120	39 years (18 – 80 yrs)	40 M 80 F

## Study results

**Table 2: Clinical trial study results.**

Primary Endpoints	Associated value and statistical significance for Placebo or active control
<p>C-94-10</p> <p>Onset of action and duration of action for itching and redness.</p>	<p>Comparison between the four (4) olopatadine concentrations revealed a non linear dose relationship. All four (4) concentrations were statistically significant from placebo, however results showed the 0.1% olopatadine concentration to be most effective in reducing ocular itching and redness.</p> <p>At 3, 10 and 20 minutes, Olopatadine 0.1% showed a mean point score reduction (range 0-4) in ocular itching compared to placebo of -1.72, -1.68 and -1.28 (<math>P \leq 0.05</math>), and a -2.72, -3.48 and -2.78 point score reduction (range 0-12) in ocular redness* compared to placebo (<math>P \leq 0.05</math>) when instilled 27 minutes prior to the conjunctival allergen challenge.</p> <p>Olopatadine 0.1% demonstrated a 6 hour duration of action when instilled 6 hours before the conjunctival allergen challenge. Results show a mean point score reduction (range 0-4) of -1.46, -1.70 and -1.07 in ocular itching compared to placebo (<math>P \leq 0.05</math>) at 3, 10 and 20 minutes following the allergen challenge. Similarly ocular redness<sup>†</sup> scores showed a mean -1.52, -1.76 and -1.33 point score reduction (range 0-12) compared to placebo (<math>P \leq 0.05</math>) at 3, 10 and 20 minutes following the allergen challenge.</p> <p>Olopatadine 0.1% when instilled 8 hours before the conjunctival allergen challenge show a mean point score reduction (range 0-4) of -1.48, -1.62 and -0.92 in ocular itching compared to placebo (<math>P \leq 0.05</math>) at 3, 10 and 20 minutes following the onset-of-action challenge. Similarly ocular redness<sup>†</sup> scores showed a mean -1.58, -1.78 and -1.42 point score reduction (range 0-12) compared to placebo (<math>P \leq 0.05</math>) at 3, 10 and 20 minutes following the onset-of-action challenge.</p>
<p>C-94-58</p> <p>Onset of action and duration of action for itching and redness.</p>	<p>Olopatadine 0.1% was statistically superior to placebo in preventing ocular itching and redness with 3 minutes of the onset of action challenge. This difference from placebo persisted at the 8 hour duration of action challenge.</p> <p>At 3, 10 and 20 minutes post challenge, Olopatadine 0.1% showed a mean point score reduction (range 0-4) in ocular itching compared to placebo of -0.88, -1.19 and -1.07 (<math>P \leq 0.05</math>), and a -1.60, -1.69 and -1.38 point score reduction (range 0-12) in ocular redness<sup>†</sup> compared to placebo (<math>P \leq 0.05</math>), when one drop was instilled 27 minutes prior to the conjunctival allergen challenge.</p> <p>Olopatadine 0.1% when instilled 8 hours before the conjunctival allergen challenge show a mean point score reduction (range 0-4) of -0.37, -0.58 and -0.75 in ocular itching compared to placebo (<math>P \leq 0.05</math>) at 3, 10 and 20 minutes following the conjunctival allergen challenge. Ocular redness<sup>†</sup> scores showed a mean -0.13, -0.52 and -0.45 point score reduction (range 0-12) compared to placebo at 3, 10 and 20 minutes following the conjunctival allergen challenge.</p>

<p>C-94-39</p> <p>Onset of action and duration of action for itching and redness.</p>	<p>Olopatadine 0.1% was statistically superior to placebo in preventing ocular itching and redness with 3 minutes of the onset of action challenge. This difference from placebo persisted at the 8 hour duration of action challenge.</p> <p>At 3, 10 and 20 minutes post challenge, Olopatadine 0.1% showed a mean point score reduction (range 0-4) in ocular itching compared to placebo of -1.25, -1.77 and -1.24 (<math>P \leq 0.05</math>), and a -2.18, -2.62 and -1.90 point score reduction (range 0-12) in ocular redness<sup>†</sup> compared to placebo (<math>P \leq 0.05</math>), when one drop was instilled 27 minutes prior to the conjunctival allergen challenge.</p> <p>Olopatadine 0.1% when instilled 8 hours before the conjunctival allergen challenge show a mean point score reduction (range 0-4) of -1.14, -1.29 and -1.06 in ocular itching compared to placebo (<math>P \leq 0.05</math>) at 3, 10 and 20 minutes following the onset-of-action challenge. Ocular redness<sup>†</sup> scores showed a mean -1.47, -1.23 and -0.87 point score reduction (range 0-12) compared to placebo (<math>P \leq 0.05</math>) at 3, 10 and 20 minutes following the conjunctival allergen challenge.</p>
---	---

<sup>†</sup> Ocular redness is calculated as the sum of the ciliary redness (range 0-4), conjunctival redness (range 0-4) and episcleral redness (range 0-4) scores.

In well controlled clinical studies, PATANOL produced significantly less ocular discomfort (burning and stinging) compared to Acular<sup>®</sup> (ketorolac tromethamine) 0.5% Sterile Ophthalmic Solution and Livostin<sup>™</sup> 0.05% (levocabastine hydrochloride ophthalmic suspension). PATANOL also had significantly less effects on visual clarity relative to both Acular<sup>®</sup> and Livostin<sup>™</sup>.

## DETAILED PHARMACOLOGY

Olopatadine is an anti-allergic agent that exerts its effects through multiple distinct mechanisms of action. Olopatadine is a mast cell stabilizer and a potent, selective histamine H<sub>1</sub> antagonist (10) that inhibits the *in vivo* type 1 immediate hypersensitivity reaction. *In vitro* studies have demonstrated the ability of olopatadine to stabilize human conjunctival mast cells and inhibit immunologically-stimulated release of histamine. In addition, olopatadine inhibits the release of other mast cell inflammatory mediators [i.e., histamine, tryptase, prostaglandin D<sub>2</sub> and TNF $\alpha$  (4,9,11,12)] as demonstrated in *in vitro* studies. Olopatadine is a selective histamine H<sub>1</sub> receptor antagonist *in vitro* and *in vivo* as demonstrated by its ability to inhibit histamine binding and histamine-stimulated vascular permeability in the conjunctiva following topical ocular administration (11). Olopatadine is also an inhibitor of pro-inflammatory cytokine secretion from human conjunctival epithelial cells (13). Decreased chemotaxis and inhibition of eosinophil activation has also been reported (6,8). Olopatadine is devoid of effects on alpha-adrenergic, dopamine, muscarinic type 1 and 2, and serotonin receptors.

### Human Pharmacodynamics

Olopatadine had no observed effect on heart rate, cardiac conduction (PR and QRS interval duration), cardiac repolarization (QT duration) or wave form morphology relative to placebo in 2 double-masked, placebo controlled, 2-way crossover studies of 102 subjects given 5-mg oral doses of olopatadine every 12 hours for 2.5 days and 32 subjects given 20-mg oral doses twice-

daily for 13.5 days [C-00-23 and C-02-54]. No clinically relevant or statistically significant changes in mean QTcF (determined to be the most appropriate heart correction formula for both study populations) at steady-state from baseline were observed in either study. A categorical analysis of QTc (< 30 ms, 30 ms-60 ms, or > 60 ms) showed no statistically significant differences between olopatadine and placebo in both studies. An analysis of the maximal change from baseline in QTcF showed the difference was higher for placebo than for olopatadine.

### **Human Pharmacokinetics**

Following topical ocular administration in man, olopatadine was shown to have low systemic exposure. Two studies in normal volunteers (totalling 24 subjects) dosed bilaterally with Olopatadine 0.15% ophthalmic solution once every 12 hours for 2 weeks demonstrated plasma concentrations to be generally below the quantitation limit of the assay (<0.5 ng/mL). Samples in which olopatadine was quantifiable were typically found within 2 hours of dosing and ranged from 0.5 to 1.3 ng/mL. These plasma concentrations were greater than 300 fold below those observed with a well-tolerated 20 mg oral multiple-dose regimen. In oral studies, olopatadine was found to be well absorbed. The half-life in plasma was 7-14 hours, and elimination was predominantly through renal excretion. Approximately 60-70% of the dose was recovered in the urine as parent drug. Two metabolites, the mono-desmethyl and the N-oxide, were detected at low concentrations in the urine.

## **TOXICOLOGY**

The acute toxicity of olopatadine hydrochloride has been investigated in mice, rats and dogs. Mice and rats demonstrated that olopatadine hydrochloride was not an acute toxicity hazard with oral LD50 values greater than 1150 mg/kg and 3870 mg/kg for mice and rats, respectively.

Subchronic and chronic oral toxicity studies in rats and dogs demonstrated that the liver and kidney were target organs for olopatadine hydrochloride toxicity. In rats, ophthalmology and hematology parameters were unaffected following chronic administration of olopatadine hydrochloride. In chronic dog studies, ophthalmology, hematology, blood chemistry and organ weight parameters were unaffected by olopatadine hydrochloride administration.

A one-month topical ocular study was conducted with 0.1% (4 times a day) or 0.2% Olopatadine hydrochloride (4 and 5 times a day) Ophthalmic Solution in New Zealand White (NZW) rabbits. No signs of pharmacotoxicity were observed. Slit-lamp and indirect ocular evaluations and pachymetry revealed no treatment-related findings. Clinical pathology data and histopathology were unremarkable.

Chronic topical ocular studies were conducted with olopatadine hydrochloride in rabbits and monkeys. Administration of olopatadine hydrochloride at concentrations of 0.1, 0.5 and 1.0% QID to NZW rabbits elicited no signs of pharmacotoxicity. No treatment-related findings were observed during slit-lamp and indirect ocular evaluations and pachymetry measurements. Clinical pathology data and histopathology were unremarkable. Similar findings were observed

following six months of topical ocular administration of olopatadine hydrochloride at concentrations of 0.1, 0.2 and 0.5% QID to cynomolgus monkeys.

Antigenicity: Olopatadine hydrochloride was demonstrated to have a low potential for antigenicity when tested in mice and guinea pigs or in an *in vitro* passive hemagglutination test.

## REFERENCES

1. Abelson MB, Schaefer K. Conjunctivitis of allergic origin: Immunologic mechanisms and current approaches to therapy. *Surv Ophthalmol* 38:115-132, 1993.
2. Allansmith MR, Ross R. Ocular allergy. *Clinical Allergy* 18:1-13, 1988.
3. Allansmith MR, Ross R. Ocular allergy and mast cell stabilizers. *Survey of Ophthalmology* 30:226-244, 1986.
4. Cook EB, Stahl JL, Barney NP, Graziano FM. Olopatadine inhibits TNF $\alpha$  release from human conjunctival mast cells. *Ann Allergy Asthma Immunol* 84:504-508, 2000.
5. Friedlander MH. Conjunctival provocative tests: a model of human ocular allergy. *Trans Am Ophthalmologic Soc.* 577-97, 1989.
6. Ikemura T, Manabe H, Sasaki Y, Ishu H, Onuma K, Miki I, Kase H, Sato S, Kitamura S, Ohmori K. KW-4679, an antiallergic drug, inhibits the production of inflammatory lipids in human polymorphonuclear leukocytes and guinea pig eosinophils. *Int Arch Allergy Immunol* 110:57-63, 1996.
7. Leonardi A, Abelson MB. Double-masked, randomized, placebo-controlled clinical study of the mast cell-stabilizing effects of treatment with olopatadine in the conjunctival allergen challenge model in humans. *Clin Ther* 25:2539-52, 2003.
8. Ohmori K, Ishii H, Sasaki Y, Ikemura T, Manabe H, Kitamura S. Effects of KW-4679, a new orally active antiallergic drug, on antigen induces bronchial hyperresponsiveness, airway inflammation and immediate and late asthmatic responses in guinea pigs. *Int Arch Allergy Immunol* 110:64-72, 1996.
9. Sharif NA, Xu SX, Miller ST, Gamache DA, Yanni JM. Characterization of the ocular antiallergic and antihistaminic effects of olopatadine (AL-4943A), a novel drug for treating ocular allergic diseases. *JPET* 278:1252-1261, 1996.
10. Sharif NA, Xu SX, Yanni JM. Olopatadine (AL-4943A): Ligand binding and functional studies on a novel, long acting H<sub>1</sub>-selective histamine antagonist and antiallergic agent for use in allergic conjunctivitis. *J Ocular Pharmacol* 12:401-407, 1996.

11. Weimer LK, Gamache DA, Yanni JM. Histamine-stimulated cytokine secretion from human conjunctival epithelial cells: Inhibition by histamine H<sub>1</sub> antagonists. *Int Arch Allergy Immunol* 115:288-293, 1998.
12. Yanni JM, Stephens DJ, Miller ST, Weimer LK, Graff G, Parnell D, Lang LS, Spellman JM, Brady MT, Gamache DA. The *in vitro* and *in vivo* ocular pharmacology of olopatadine (AL-4943A), an effective anti-allergic/ antihistaminic agent. *J Ocular Pharmacol Ther* 12:389-400, 1996.
13. Yanni JM, Miller ST, Gamache DA, Spellman JM, Xu SX, Sharif NA. Comparative effects of topical anti-allergy drugs on human conjunctival mast cells. *Ann Allergy Asthma Immunol* 79:541-545, 1997.
14. Yanni JM, Weimer LK, Sharif NA, Xu SX, Gamache DA, Spellman JM. Inhibition of histamine-induced human conjunctival epithelial cell responses by ocular allergy drugs. *Arch Ophthalmol* 117:643-647, 1999.

## PART III: CONSUMER INFORMATION

### PATANOL® olopatadine hydrochloride ophthalmic solution

This leaflet is part III of a three-part "Product Monograph" published when PATANOL® was approved for sale in Canada and is designed specifically for Consumers. This leaflet is a summary and will not tell you everything about PATANOL. Contact your doctor or pharmacist if you have any questions about the drug.

#### ABOUT THIS MEDICATION

##### **What the medication is used for:**

PATANOL is used for the prevention and treatment of signs and symptoms of allergic conjunctivitis.

Allergic conjunctivitis: Some materials (allergens) like pollens, house dust or animal fur may cause allergic reactions resulting in itching, redness as well as swelling of the surface of your eye.

##### **What it does:**

PATANOL is a medicine for treatment and control of allergic conditions of the eye. It works in two different ways by reducing and controlling the intensity of the allergic reaction.

##### **When it should not be used:**

PATANOL should not be used if you are allergic (*hypersensitive*) to olopatadine hydrochloride, any of the other ingredients or components of the container (see **What the important non-medicinal ingredients are**).

Tell your doctor if you have allergies.

Do not use PATANOL in children under the age of three years.

##### **What the medicinal ingredient is:**

olopatadine hydrochloride

##### **What the important non-medicinal ingredients are:**

**Preservative:** benzalkonium chloride

**Other ingredients include:** dibasic sodium phosphate, purified water and sodium chloride. Tiny amounts of hydrochloric acid or sodium hydroxide are sometimes added to maintain proper pH balance.

##### **What dosage forms it comes in:**

Ophthalmic solution (eye drops): 0.1% w/v, supplied in a plastic dispenser bottle with a screw cap containing 5 mL, 10 mL or 15 mL.

#### WARNINGS AND PRECAUTIONS

**Pregnancy or breast-feeding:** If you are pregnant, or planning to become pregnant, talk to your doctor before you use PATANOL. If you are breast-feeding, do not use PATANOL; it may get into your breast milk.

##### **Use of PATANOL and use of contact lenses**

- Do not wear contact lenses if your eyes are red.
- PATANOL contains a preservative, benzalkonium chloride, which may cause eye irritation and is known to discolour soft contact lenses. Do not use the drops while wearing contact lenses.
- Remove your contacts before applying PATANOL and wait at least 15 minutes before putting your contacts back in.

##### **Use of PATANOL with other eye drops or ointments**

- If you use other eye drops, wait at least 5 minutes between putting in PATANOL and the other drops.
- Apply eye ointments last.

**Driving and using machines:** You may find that your vision is blurred for a time just after you use PATANOL. Do not drive or use machines until your vision is clear.

#### INTERACTIONS WITH THIS MEDICATION

Please tell your doctor if you are taking or have recently taken any other medicines, even products you have bought yourself without prescription or natural health products.

There are no known drugs that interact with PATANOL.

#### PROPER USE OF THIS MEDICATION

PATANOL is an eye drop. Only use it in your eye(s).

If you are using other eye drops, wait at least 5 minutes before putting in PATANOL and other eye drops. If you are using an eye ointment, you should apply it last. Remove your contacts before applying PATANOL and wait at least 15 minutes before putting your contacts back in.

##### **Usual dose:**

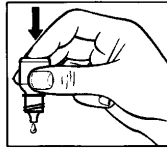
Adults and Children (3 years and older): 1 to 2 drops in each affected eye twice daily.



### Instructions for use:



1



2

1. Get the PATANOL bottle and a mirror.
2. Wash your hands.
3. Twist off the cap, being careful not to touch the dropper tip. After cap is removed: if tamper evident snap collar is loose, remove before using product.
4. Hold the bottle, pointing it down, between your thumb and middle finger.
5. Tilt your head back. Pull down your eyelid with a clean finger, until there is a 'pocket' between the eyelid and your eye. The drop will go in here (picture 1).
6. Bring the bottle tip close to the eye. Use the mirror if it helps. **Do not touch your eye or eyelid, or any surface with the dropper.** It could contaminate the drops, cause an eye infection and damage the eyes.
7. Gently press on the base of the bottle with your forefinger to release one drop at a time. Do not squeeze the bottle: it is designed so that just a gentle press on the bottom is all that is required (picture 2).
8. If you use drops in both eyes, repeat the steps for the other eye.
9. Put the bottle cap firmly back on immediately after use.

### **Overdose:**

If you think you have used too much PATANOL, contact a healthcare professional, hospital emergency department or regional Poison Control Centre immediately, even if there are no symptoms.

If you get too much in your eyes, rinse it all out with warm water. Don't put in any more drops until it's time for your next regular dose.

### **Missed dose:**

If you forget to use PATANOL, use a single drop as soon as you remember, and then go back to your regular routine. Do not use a double dose to make up for the one missed.

## **SIDE EFFECTS AND WHAT TO DO ABOUT THEM**

A small number of people who use PATANOL may get side

effects. They can be unpleasant, but most of them disappear rapidly.

You can usually continue using the drops, unless the effects are serious. If you're worried, talk to a doctor or pharmacist.

Side effects may include:

In the eye:

- eye problems such as dry, itchy, red, irritated or crusted eyes
- eye surface inflammation with or without surface damage
- eye discharge
- eye pain
- increased tear production
- eyelid redness, spasm, swelling or dryness
- sensitivity to light
- blurred vision
- staining in your eye
- burning, stinging or gritty feeling or a feeling as if something is trapped in the eye.

Other areas of your body:

- headache
- dizziness
- fatigue or tiredness
- nasal dryness
- a dry mouth
- a change in your sense of taste
- nausea
- red or itchy skin.

If you notice any side effects, other than discomfort, please inform your doctor or pharmacist.

## SERIOUS SIDE EFFECTS, HOW OFTEN THEY HAPPEN AND WHAT TO DO ABOUT THEM

Symptom / effect		Talk with your doctor or pharmacist		Stop taking drug and call your doctor or pharmacist
		Only if severe	In all cases	
Rare	<b>Allergic reactions:</b> swelling of the mouth and throat, shortness of breath, hives, severe itching and rash			✓

*This is not a complete list of side effects. For any unexpected effects while taking PATANOL, contact your doctor or pharmacist.*

## HOW TO STORE IT

Store at room temperature or between 4 °C - 30°C.  
Throw away the bottle at the end of treatment.  
Keep out of the reach and sight of children.

## REPORTING SUSPECTED SIDE EFFECTS

You can report any suspected adverse reactions associated with the use of health products to the Canada Vigilance Program by one of the following 3 ways:

- Report online at [www.healthcanada.gc.ca/medeffect](http://www.healthcanada.gc.ca/medeffect)
- Call toll-free at 1-866-234-2345
- Complete a Canada Vigilance Reporting Form and:
  - Fax toll-free to 1-866-678-6789, or
  - Mail to: Canada Vigilance Program  
Health Canada  
Postal Locator 1908C  
Ottawa, Ontario  
K1A 0K9

Postage paid labels, Canada Vigilance Reporting Form and the adverse reaction reporting guidelines are available on the MedEffect™ Canada Web site at [www.healthcanada.gc.ca/medeffect](http://www.healthcanada.gc.ca/medeffect).

*NOTE: Should you require information related to the management of side effects, contact your health professional. The Canada Vigilance Program does not provide medical advice.*

## MORE INFORMATION

This document plus the full Product Monograph, prepared for health professionals can be obtained by contacting the sponsor, Novartis Pharmaceuticals Canada Inc. at 1-800-363-8883.

This leaflet was prepared by Novartis Pharmaceuticals Canada Inc.

Last revised: March 2, 2018

PATANOL is a registered trademark.

Novartis Version: March 4, 2024