

PRODUCT MONOGRAPH  
INCLUDING PATIENT MEDICATION INFORMATION

**<sup>Pr</sup>TEGRETOL<sup>®</sup>**

carbamazepine tablets  
Tablets, 200 mg, oral use  
Novartis Standard

**<sup>Pr</sup>TEGRETOL<sup>®</sup> CR**

carbamazepine controlled-release tablets  
Controlled-Release Tablets, 200 mg and 400 mg, oral use  
Novartis Standard

**<sup>Pr</sup>TEGRETOL<sup>®</sup> Suspension**

carbamazepine suspension  
Suspension, 100 mg/5 mL, oral use  
Novartis Standard

Anticonvulsant

For Symptomatic Relief of Trigeminal Neuralgia

Antimanic

ATC code: N03AF01

Novartis Pharmaceuticals Canada Inc.  
385 Bouchard Blvd.,  
Dorval, Quebec  
H9S 1A9  
www.novartis.ca

Date of Initial Authorization :  
Dec 31, 1969

Date of Revision:  
27 May 2021

Submission Control Number: 247229

TEGRETOL is a registered trademark.

---

*<sup>Pr</sup>TEGRETOL<sup>®</sup> carbamazepine tablets, <sup>Pr</sup>TEGRETOL<sup>®</sup> CR carbamazepine controlled-release tablets,*

*<sup>Pr</sup>TEGRETOL<sup>®</sup> Suspension carbamazepine suspension*

Page 1 of 48

## RECENT MAJOR LABEL CHANGES

None at the time of authorization

## TABLE OF CONTENTS

Sections or subsections that are not applicable at the time of authorization are not listed.

<b>TABLE OF CONTENTS</b> .....	<b>2</b>
<b>PART I: HEALTH PROFESSIONAL INFORMATION</b> .....	<b>4</b>
<b>1 INDICATIONS</b> .....	<b>4</b>
1.1 Pediatrics.....	4
1.2 Geriatrics.....	5
<b>2 CONTRAINDICATIONS</b> .....	<b>5</b>
<b>3 SERIOUS WARNINGS AND PRECAUTIONS BOX</b> .....	<b>6</b>
<b>4 DOSAGE AND ADMINISTRATION</b> .....	<b>7</b>
4.1 Dosing Considerations .....	7
4.2 Recommended Dose and Dosage Adjustment .....	7
4.4 Administration .....	9
4.5 Missed Dose .....	9
<b>5 OVERDOSAGE</b> .....	<b>9</b>
<b>6 DOSAGE FORMS, STRENGTHS, COMPOSITION AND PACKAGING</b> .....	<b>10</b>
<b>7 WARNINGS AND PRECAUTIONS</b> .....	<b>11</b>
7.1 Special Populations .....	18
7.1.1 Pregnant Women .....	18
7.1.2 Breast-feeding.....	20
7.1.3 Pediatrics.....	20
7.1.4 Geriatrics.....	20
<b>8 ADVERSE REACTIONS</b> .....	<b>20</b>
8.1 Adverse Reaction Overview .....	20
8.2 Clinical Trial Adverse Reactions .....	24
8.5 Post-Market Adverse Reactions.....	24
<b>9 DRUG INTERACTIONS</b> .....	<b>24</b>
9.1 Serious Drug Interactions .....	24

9.2	Drug Interactions Overview .....	25
9.3	Drug-Behavioural Interactions.....	25
9.4	Drug-Drug Interactions .....	25
9.5	Drug-Food Interactions.....	29
9.6	Drug-Herb Interactions .....	29
9.7	Drug-Laboratory Test Interactions.....	29
<b>10</b>	<b>CLINICAL PHARMACOLOGY .....</b>	<b>29</b>
10.1	Mechanism of Action .....	29
10.2	Pharmacodynamics.....	29
10.3	Pharmacokinetics.....	30
<b>11</b>	<b>STORAGE, STABILITY AND DISPOSAL .....</b>	<b>31</b>
	<b>PART II: SCIENTIFIC INFORMATION .....</b>	<b>32</b>
<b>13</b>	<b>PHARMACEUTICAL INFORMATION .....</b>	<b>32</b>
<b>14</b>	<b>CLINICAL TRIALS .....</b>	<b>32</b>
14.1	Trial Design and Study Demographics .....	32
14.2	Study Results.....	32
<b>15</b>	<b>MICROBIOLOGY .....</b>	<b>33</b>
<b>16</b>	<b>NON-CLINICAL TOXICOLOGY .....</b>	<b>33</b>
	<b>PATIENT MEDICATION INFORMATION.....</b>	<b>35</b>

## **PART I: HEALTH PROFESSIONAL INFORMATION**

### **1 INDICATIONS**

#### **Epilepsy:**

##### **Adults (> 18 years of age)**

TEGRETOL® (carbamazepine) is indicated for use as an anticonvulsant drug either alone or in combination with other anticonvulsant drugs.

Carbamazepine is not effective in controlling absence, myoclonic or atonic seizures, and does not prevent the generalization of epileptic discharge. Moreover, exacerbation of seizures may occasionally occur in patients with atypical absences.

#### **Trigeminal Neuralgia:**

##### **Adults (> 18 years of age)**

TEGRETOL is indicated for the symptomatic relief of pain of trigeminal neuralgia only during periods of exacerbation of true or primary trigeminal neuralgia (tic douloureux). It should not be used preventively during periods of remission. In some patients, TEGRETOL has relieved glossopharyngeal neuralgia. For patients who fail to respond to TEGRETOL, or who are sensitive to the drug, recourse to other accepted measures must be considered.

Carbamazepine is not a simple analgesic and should not be used to relieve trivial facial pains or headaches.

#### **Treatment of Acute Mania and Prophylaxis in Bipolar (Manic-Depressive) Disorders:**

##### **Adults (> 18 years of age)**

TEGRETOL may be used as a monotherapy or as an adjunct to lithium in the treatment of acute mania or prophylaxis of bipolar (manic-depressive) disorders in patients who are resistant to or are intolerant of conventional antimanic drugs. Carbamazepine may be a useful alternative to neuroleptics in such patients. Patients with severe mania, dysphoric mania or rapid cycling who are non-responsive to lithium may show a positive response when treated with carbamazepine.

It is important to note that these recommendations are based on extensive clinical experience and some clinical trials versus active comparison agents.

#### **1.1 Pediatrics**

##### **Epilepsy:**

##### **Pediatrics (> 6 years of age):**

---

*Pr*TEGRETOL® carbamazepine tablets, *Pr*TEGRETOL® CR carbamazepine controlled-release tablets,

*Pr*TEGRETOL® Suspension carbamazepine suspension

TEGRETOL is indicated for use as an anticonvulsant drug either alone or in combination with other anticonvulsant drugs (see [4.2 Recommended Dose and Dosage Adjustment, Use in Epilepsy, Adults and Children Over 12 Years of Age and Children 6-12 Years of Age](#)).

### **Trigeminal Neuralgia:**

#### **Pediatrics (< 18 years of age)**

The safety and efficacy of TEGRETOL in pediatric patients (<18 years of age) have not been studied. TEGRETOL is not authorized for pediatric use in trigeminal neuralgia.

### **Treatment of Acute Mania and Prophylaxis in Bipolar (Manic-Depressive) Disorders:**

#### **Pediatrics (< 18 years of age)**

The safety and efficacy of TEGRETOL in pediatric patients (<18 years of age) have not been studied. TEGRETOL is not authorized for pediatric use in acute mania and prophylaxis in bipolar (manic-depressive) disorders.

## **1.2 Geriatrics**

#### **Geriatrics (> 65 years of age)**

For all indications, due to drug interactions and different antiepileptic drug pharmacokinetics, the dosage of TEGRETOL should be selected with caution in elderly patients. See [7.1.4 WARNINGS AND PRECAUTIONS, Special Populations, Geriatrics and 4.1 Dosing Considerations, Geriatrics](#).

## **2 CONTRAINDICATIONS**

TEGRETOL is contraindicated in:

- Patients who are hypersensitive to carbamazepine or to any of the components of the tablets or suspension. For a complete listing, see [6 DOSAGE FORMS, STRENGTHS, COMPOSITION AND PACKAGING](#).
- Patients who are hypersensitive to carbamazepine or structurally related drugs like the tricyclic compounds (e.g. amitriptyline, trimipramine, imipramine, or their analogues or metabolites).
- Patients with hepatic disease, a history of bone-marrow depression, a history of hepatic porphyria (acute intermittent porphyria, variegate porphyria, porphyria cutanea tarda), or serious blood disorder.
- Conjunction with, or immediately after, a monoamine oxidase (MAO) inhibitor. See [9 DRUG INTERACTIONS](#).
- Conjunction with itraconazole and voriconazole. See [9 DRUG INTERACTIONS](#).
- Patients presenting atrioventricular heart block. See [7 WARNINGS AND PRECAUTIONS](#).

## Cardiovascular.

### 3 SERIOUS WARNINGS AND PRECAUTIONS BOX

**HEMATOLOGIC:** Although reported infrequently, serious adverse effects have been observed during the use of TEGRETOL. Agranulocytosis and aplastic anemia, with a fatal outcome, have occurred very rarely. Leucopenia, thrombocytopenia, hepatocellular and cholestatic jaundice, and hepatitis have also been reported. However, in the majority of cases, leucopenia and thrombocytopenia were transient and did not signal the onset of either aplastic anemia or agranulocytosis. It is important that TEGRETOL be used carefully and close clinical and frequent laboratory supervision should be maintained throughout treatment in order to detect as early as possible signs and symptoms of a possible blood dyscrasia. TEGRETOL should be discontinued if any evidence of significant bone marrow depression appears. See [7 WARNINGS AND PRECAUTIONS, Monitoring and Laboratory Tests, Bone marrow function.](#)

**DERMATOLOGIC: Steven's-Johnson Syndrome and Toxic Epidermal Necrolysis:** Serious and sometimes fatal dermatologic reactions, including Toxic Epidermal Necrolysis (TEN) and Stevens-Johnson Syndrome (SJS), have been reported with TEGRETOL. In countries with mainly Caucasian populations, these reactions are estimated to occur in 1 to 6 per 10,000 new users, but in some Asian countries (e.g., Taiwan, Malaysia and the Philippines) the risk is estimated to be about 10 times higher.

Human Leukocyte Antigens (HLA)-A\*3101 and HLA-B\*1502 may be risk factors for the development of serious cutaneous adverse drug reactions. Retrospective genome-wide studies in Japanese and Northern European populations reported an association between severe skin reactions (SJS, TEN, Drug Reaction-with Eosinophilia and Systemic Symptoms (DRESS), Acute Generalized Exanthematous Pustulosis (AGEP) and maculopapular rash) associated with carbamazepine use and the presence of the HLA-A\*3101 allele in these patients. Similarly, in studies that included small samples of patients of HanRash Chinese ancestry, a strong association was found between the risk of developing SJS/TEN and the presence of the HLA-B\*1502 allele. The HLA-B\*1502 allele is found almost exclusively in individuals with ancestry across broad areas of Asia (This provides a rough estimate of the frequency of HLA-B\*1502 allele in various populations: from 2 to 12% in Han Chinese populations, about 8% in Thai populations, and above 15% in the Philippines and some Malaysian populations. Allele frequencies up to about 2% and 6% have been reported in Korea and India, respectively. The frequency of the HLA-B\*1502 allele is negligible in persons from European descent, several African populations, indigenous peoples of the Americas, Hispanic populations sampled and in Japanese (< 1%). The estimated frequencies have limitations due to the wide variation in allele frequencies that exist within ethnic groups, the difficulties in ascertaining ethnic ancestry and the likelihood of mixed ancestry). It is, therefore, recommended that physicians consider HLA-A\*3101 and HLA-B\*1502 genotyping as a screening tool in genetically at-risk populations. See [7 WARNINGS AND PRECAUTIONS, Ancestry and Allelic Variations in the HLA-A Gene and Ancestry and Allelic Variations in the HLA-B Gene.](#) Until further information is available, the use of TEGRETOL and other anti-epileptic drugs associated with SJS/TEN should be avoided in

patients who test positive for the HLA-A\*3101 or HLA-B\*1502 alleles ([see 7 WARNINGS AND PRECAUTIONS, Ancestry and Allelic Variations in the HLA-A Gene; Ancestry and Allelic Variation in the HLA-B Gene; Important Limitations of HLA-A and HLA-B Genotyping](#)).

Treatment recommendations for dermatological reactions: TEGRETOL should be discontinued at the first sign of a rash, unless the rash is clearly not drug-related. If signs or symptoms suggest SJS/TEN, use of this drug should not be resumed and alternative therapy should be considered. The use of other anti-epileptic drugs associated with SJS/TEN should be avoided in patients who have shown severe dermatological reactions during TEGRETOL treatment.

**CARCINOGENICITY:** Long-term toxicity studies in rats indicated a potential carcinogenic risk. See [16 NON-CLINICAL TOXICOLOGY](#). Therefore, the possible risk of the drug must be weighed against the potential benefits before prescribing TEGRETOL to individual patients.

## 4 DOSAGE AND ADMINISTRATION

### 4.1 Dosing Considerations

Since a given dose of TEGRETOL Suspension produces higher peak carbamazepine levels than the same dose in tablet form, it is advisable to start with low doses and to increase slowly to avoid adverse reactions. When switching a patient from TEGRETOL (tablets) to TEGRETOL Suspension, the same number of mg per day should be given in smaller, more frequent doses (i.e., BID TEGRETOL (tablets) to TID TEGRETOL Suspension).

**Geriatrics:** Due to drug interactions and different antiepileptic drug pharmacokinetics, the dosage of TEGRETOL should be selected with caution in elderly patients. In general, dose selection for an elderly patient usually starts at the low end of the dosing range ([see 4.2 Recommended Dose and Dosage Adjustment](#)), reflecting the greater frequency of decreased hepatic, renal, or cardiac function, and of concomitant disease.

**Renal insufficiency/Hepatic insufficiency:** see [10.3 Pharmacokinetics, Special Populations and Conditions](#).

### 4.2 Recommended Dose and Dosage Adjustment

#### Use in Epilepsy

TEGRETOL may be used alone or with other anticonvulsants. A low initial daily dosage of TEGRETOL with a gradual increase in dosage is advised. To achieve adequate control of seizures, dosage should be adjusted to the needs of the individual patient. Determination of plasma levels may help in establishing the optimum dosage. In the treatment of epilepsy, the dose of carbamazepine should be adjusted to maintain steady state plasma concentration of about 4 - 10 mcg/mL. See [10 CLINICAL PHARMACOLOGY](#). TEGRETOL should be taken with meals whenever possible.

TEGRETOL (tablets) and TEGRETOL Suspension should be taken in 2 to 4 divided doses daily.

---

*Pr*TEGRETOL<sup>®</sup> carbamazepine tablets, *Pr*TEGRETOL<sup>®</sup> CR carbamazepine controlled-release tablets,

*Pr*TEGRETOL<sup>®</sup> Suspension carbamazepine suspension

TEGRETOL Suspension is particularly suitable for patients who have difficulty swallowing tablets or who need initial careful adjustment of dosage.

The controlled release characteristics of TEGRETOL CR (controlled-release tablets) reduce the daily fluctuations of plasma carbamazepine. TEGRETOL CR (either whole or, if so prescribed, only half a tablet) should be swallowed unchewed with a little liquid during or after a meal. These controlled release tablets should be prescribed as a twice-daily dosage. If necessary, three divided doses may be prescribed. Some patients have been reported to require a dosage increase when switching from TEGRETOL (tablets) to TEGRETOL CR (controlled-release tablets). Dosage adjustments should be individualized based on clinical response and, if necessary, plasma carbamazepine levels.

### ***Adults and Children Over 12 Years of Age***

Initially, 100 to 200 mg once or twice a day depending on the severity of the case and previous therapeutic history. The initial dosage is progressively increased, in divided doses, until the best response is obtained. The usual optimal dosage is 800 to 1200 mg daily. In rare instances some adult patients have received 1600 mg. As soon as disappearance of seizures has been obtained and maintained, dosage should be reduced very gradually until a minimum effective dose is reached.

### ***Children 6-12 Years of Age***

Initially, 100 mg in 2 to 4 divided doses on the first day. Increase gradually by adding 100 mg per day until the best response is obtained. Dosage should generally not exceed 1000 mg daily. As soon as disappearance of seizures has been obtained and maintained, dosage should be reduced very gradually until a minimum effective dose is reached.

### ***Combination Therapy***

When added to existing anticonvulsant therapy, the drug should be added gradually while the other anticonvulsants are maintained or gradually decreased, except for phenytoin, which may be increased. See [7.1.1 WARNINGS AND PRECAUTIONS, Special Populations: Pregnant Women](#) and [9 DRUG INTERACTIONS](#).

### ***Use in Trigeminal Neuralgia***

The initial daily dosage should be small; 200 mg taken in 2 doses of 100 mg each is recommended. The total daily dosage can be increased by 200 mg/day until relief of pain is obtained. This is usually achieved at dosage between 200 and 800 mg daily, but occasionally up to 1200 mg/day may be necessary. Maximum recommended dose is 1200 mg/day. As soon as relief of pain has been obtained and maintained, progressive reduction in dosage should be attempted until a minimal effective dosage is reached. Because trigeminal neuralgia is characterized by periods of remission, attempts should be made to reduce or discontinue the use of TEGRETOL at intervals of not more than 3 months, depending upon the individual



clinical course.

Prophylactic use of the drug in trigeminal neuralgia is not recommended.

### **Use in Mania and Bipolar (Manic-Depressive) Disorders**

The initial daily dosage should be low, 200 to 400 mg/day, administered in divided doses, although higher starting doses of 400 to 600 mg/day may be used in acute mania. This dose may be gradually increased until patient symptomatology is controlled or a total daily dose of 1600 mg is achieved. Increments in dosage should be adjusted to ensure optimal patient tolerability. The usual dose range is 400 to 1200 mg/day administered in divided doses. Doses used to achieve optimal acute responses and tolerability should be continued during maintenance treatment. When given in combination with lithium and neuroleptics, the initial dosage should be low, 100 mg to 200 mg daily, and then increased gradually. A dose higher than 800 mg/day is rarely required when given in combination with neuroleptics and lithium, or with other psychotropic drugs such as benzodiazepines. Plasma levels are probably not helpful for guiding therapy in bipolar disorders.

#### **4.4 Administration**

TEGRETOL Suspension should be well shaken before use since improper re-suspension may lead to administering an incorrect dose.

#### **4.5 Missed Dose**

If a scheduled dose is missed, TEGRETOL to be administered as soon as possible. When nearing to administer the next dose, the missed dose should not be taken and should not be doubled.

### **5 OVERDOSAGE**

Lowest known lethal dose:	Estimated 3.2 g (24 year old woman).
Highest known doses survived:	80 g (34 year old man); 34 g (13 year old girl); 1.4 g (23 month old girl).

#### **Symptoms of Overdosage**

The presenting signs and symptoms of overdosage usually involve the central nervous, cardiovascular, and respiratory systems, as well as the adverse drug reactions mentioned under the Adverse Reaction section (see [8 ADVERSE REACTIONS](#)). Relapse and aggravation of the symptomatology on the 2nd or 3rd day after overdose, due to delayed absorption, should be anticipated.

*Central Nervous System:* CNS depression, disorientation, depressed level of consciousness, tremor, restlessness, somnolence, agitation, hallucination, coma, blurred vision, nystagmus, mydriasis, slurred speech, dysarthria, ataxia, dyskinesia, abnormal reflexes (slowed/hyperactive), convulsions, psychomotor disturbances, myoclonus, opisthotonia,

hypothermia/ hyperthermia, flushed skin/cyanosis, EEG changes.

*Respiratory System:* respiratory depression, pulmonary edema.

*Cardiovascular System:* tachycardia, hypotension/hypertension, conduction disturbance with widening of QRS complex, syncope in association with cardiac arrest.

*Gastrointestinal System:* nausea, vomiting, delayed gastric emptying, reduced bowel motility.

*Musculoskeletal System:* There have been some cases which reported rhabdomyolysis in association with carbamazepine toxicity.

*Renal Function:* urinary retention, oliguria or anuria; fluid retention, and water intoxication.

*Laboratory Findings:* hyponatremia, hypokalemia, leukocytosis, reduced white cell count, metabolic acidosis, hyperglycemia, glycosuria, acetonuria, increased muscle creatine phosphokinase.

### **Treatment of Overdosage**

There is no known specific antidote to TEGRETOL.

Evacuate the stomach, with an emetic or by gastric lavage and then administer activated charcoal. Delay in evacuating the stomach may result in delayed absorption, leading to relapse during recovery from intoxication.

Hemodialysis is the effective treatment modality in the management of the carbamazepine overdose.

Vital signs, including electrocardiogram to detect any cardiac arrhythmias or conduction defects, should be watched and symptomatic treatment should be administered as required. Hyperirritability or convulsions should be appropriately managed by standard medical care.

Hyponatremia should be appropriately managed by standard medical care.

Shock (circulatory collapse) should be treated with supportive measures, including intravenous fluids, oxygen, and corticosteroids.

Charcoal hemoperfusion has been recommended.

For management of a suspected drug overdose, contact your regional poison control centre.

## **6 DOSAGE FORMS, STRENGTHS, COMPOSITION AND PACKAGING**

**Table 1 – Dosage Forms, Strengths, Composition and Packaging.**

<b>Route of Administration</b>	<b>Dosage Form / Strength/Composition</b>	<b>Non-medicinal Ingredients</b>
--------------------------------	---	----------------------------------

Oral	tablets; 200 mg	Carmellose sodium, cellulose compounds, magnesium stearate, silicon dioxide.
	controlled-release tablets; 200 mg and 400 mg	Acrylic esters, castor oil derivative, carmellose sodium, cellulose compounds, iron oxides, magnesium stearate, silicon dioxide, talc, titanium dioxide.
	suspension; 100 mg/5mL	Citric acid, citrus-vanilla flavour, FD&C Yellow No. 6, pluronic polyol, potassium sorbate, propylene glycol, sucrose, sorbitol, water, xanthan gum.

### Availability of Dosage Forms

TEGRETOL tablets 200 mg are white, round, flat-faced and bevel-edged. One side bears the imprint “CG”, the other “G/K” and a score. Available in bottles of 100.

TEGRETOL CR controlled-release tablets 200 mg are beige-orange, oval and slightly biconvex. C/G engraved on one side and H/C engraved on the other. Fully bisected on both sides. Available in bottles of 100.

TEGRETOL CR controlled-release tablets 400 mg are brown-orange, oval and slightly biconvex. CG/CG engraved on one side and ENE/ENE engraved on the other. Fully bisected on both sides. Available in bottles of 100.

TEGRETOL Suspension 100 mg/5mL is orange. Available in bottles of 450 mL.

## 7 WARNINGS AND PRECAUTIONS

Please see [3 SERIOUS WARNINGS AND PRECAUTIONS BOX](#).

### Pharmacogenomics

There is growing evidence of the role of different HLA alleles in predisposing patients to immune-mediated adverse reactions.

#### **Ancestry and Allelic Variation in the HLA-A Gene**

The frequency of the HLA-A\*3101 allele, an inherited allelic variant of the HLA-A gene, varies widely between ethnic populations and its frequency is about 2 to 5% in European populations and about 10% in the Japanese population. The frequency of this allele is estimated to be less than 5% in the majority of Australian, Asian, African and North American populations with some exceptions within 5-12%. Prevalence above 15% has been estimated in some ethnic groups in South America (Argentina and Brazil), North America (US Navajo and Sioux, and Mexico Sonora Seri) and Southern India (Tamil Nadu) and between 10%-15% in other native ethnicities in these same regions.

Testing for the presence of HLA-A\*3101 allele should be considered in patients with ancestry in genetically at-risk populations (for example, patients of the Japanese and Caucasian populations, patients who belong to the indigenous populations of the Americas, Hispanic populations, people of southern India, and people of Arabic descent), prior to initiating treatment with TEGRETOL (see [7 WARNINGS AND PRECAUTIONS, Important Limitations of HLA-A and HLA-B Genotyping](#)). The use of TEGRETOL should be avoided in patients who are found to be positive for HLA-A\*3101, unless the benefits clearly outweigh the risks. Screening is generally not recommended for any current TEGRETOL users, as the risk of SJS/TEN, AGEP, DRESS and maculopapular rash is largely confined to the first few months of therapy, regardless of HLA-A\*3101 status. See [7 WARNINGS AND PRECAUTIONS, Important Limitations of HLA-A and HLA-B Genotyping](#).

### ***Ancestry and Allelic Variation in the HLA-B Gene***

In studies that included small samples of carbamazepine-treated patients of Han Chinese and Thai origin, a strong association was found between the risk of developing SJS/TEN and the presence of HLA-B\*1502, an inherited allelic variant of the HLA-B gene. The HLA-B\*1502 allele is found almost exclusively in individuals with ancestry across broad areas of Asia. Results of these studies suggest that the presence of the HLA-B\*1502 allele may be one of the risk factors for carbamazepine-associated SJS/TEN in patients with Asian ancestry. Therefore, physicians should consider HLA-B\*1502 genotyping as a screening tool in these patients. Until further information is available, the use of TEGRETOL and other anti-epileptic drugs associated with SJS/TEN should also be avoided in patients who test positive for the HLA-B\*1502 allele.

### ***Important Limitations of HLA-A and HLA-B Genotyping***

HLA-A\*3101 and HLA-B\*1502 genotyping as screening tools have important limitations and must never substitute for appropriate clinical vigilance and patient management. Many patients positive for HLA-A\*3101 and treated with TEGRETOL will not develop SJS, TEN, DRESS, AGEP or maculopapular rash and patients negative for HLA-A\*3101 of any ethnicity can still develop these severe cutaneous adverse reactions. Similarly, many HLA-B\*1502-positive Asian patients treated with TEGRETOL will not develop SJS/TEN, and these reactions can still occur infrequently in HLA-B\*1502-negative patients of any ethnicity. The role of other possible factors in the development of, and morbidity from, these severe cutaneous adverse reactions, such as antiepileptic drug (AED) dose, compliance, concomitant medications, co-morbidities, and the level of dermatologic monitoring have not been studied.

In addition, it should be kept in mind that over 90% of TEGRETOL treated patients who will experience SJS/TEN have this reaction within the first few months of treatment. This information may be taken into consideration when deciding whether to screen genetically at-risk patients currently on TEGRETOL.

The identification of subjects carrying the HLA-B\*1502 allele and the avoidance of carbamazepine therapy in these subjects has been shown to decrease the incidence of carbamazepine-induced SJS/TEN.

Should signs and symptoms suggest a severe skin reaction such as SJS or TEN, TEGRETOL should be withdrawn at once.

### **Hypersensitivity**

TEGRETOL can trigger hypersensitivity reactions, including Drug Reaction with Eosinophilia and Systemic Symptoms (DRESS), a delayed multi-organ hypersensitivity disorder with fever, rash, vasculitis, lymphadenopathy, pseudo lymphoma, arthralgia, leukopenia, eosinophilia, hepatosplenomegaly, abnormal liver function tests and vanishing bile duct syndrome (destruction and disappearance of the intrahepatic bile ducts), that may occur in various combinations. One or more organs such as skin, liver, lungs, kidneys, pancreas, myocardium, bone marrow, spleen, thymus, lymph nodes and colon may be affected. See [8 ADVERSE REACTIONS](#).

The HLA-A\*3101 allele has been found to be associated with the occurrence of hypersensitivity syndrome, including maculopapular rash.

In general, if signs and symptoms suggestive of hypersensitivity reactions occur, TEGRETOL should be withdrawn immediately, and alternative therapy should be considered.

Patients who have exhibited hypersensitivity reactions to carbamazepine should be informed that approximately 25 to 30 % of these patients may experience hypersensitivity reactions with oxcarbazepine-

Cross-hypersensitivity can occur between carbamazepine and aromatic antiepileptic drugs (e.g. phenytoin, primidone and phenobarbital).

### **General**

A tolerance may develop to the action of carbamazepine after a few months of treatment and should be watched for. See [14 CLINICAL TRIALS](#).

TEGRETOL should not be used in conjunction with the antiretroviral agent delavirdine due to potential for loss of virologic response and possible resistance to delavirdine or to the class of nonnucleoside reverse transcriptase inhibitors. Also see [9.4 Drug-Drug Interactions](#).

#### *Anticholinergic effects*

Like other tricyclic compounds, carbamazepine has a moderate anticholinergic action which is responsible for some of its side effects. Because of its anticholinergic action, carbamazepine should be given cautiously, if at all, to patients with increased intraocular pressure or urinary retention.

#### *Falls*

TEGRETOL treatment has been associated with ataxia, dizziness, somnolence, hypotension, confusional state, sedation (see [8.5 Post-Market Adverse Reactions](#)) which may lead to falls and, consequently fractures or other injuries. For patients with diseases, conditions, or medications that could exacerbate these effects, complete risk assessment of fall should be considered recurrently for patients on long-term TEGRETOL treatment.

## Bone Disorders

Long-term use of antiepileptics such as carbamazepine, phenobarbital, phenytoin, primidone, oxcarbazepine, lamotrigine and sodium valproate is associated with a risk of decreased bone mineral density that may lead to weakened or brittle bones.

## Carcinogenesis and Mutagenesis

Long-term toxicity studies in rats indicated a potential carcinogenic risk. See [16 NON-CLINICAL TOXICOLOGY](#). Therefore, the possible risk of the drug must be weighed against the potential benefits before prescribing TEGRETOL to individual patients.

## Cardiovascular

TEGRETOL should be used cautiously in patients with a history of coronary artery disease, organic heart disease, or congestive heart failure. Carbamazepine may suppress ventricular automaticity due to its membrane-depressant effect, similar to that of quinidine and procainamide, associated with suppression of phase 4 depolarization of the heart muscle fiber. See [14 CLINICAL TRIALS](#).

If a defective conductive system is suspected, an ECG should be performed before administering TEGRETOL, in order to exclude patients with atrioventricular block.

## Driving and Operating Machinery

Patients' ability to react may be impaired by their medical condition resulting in seizures and adverse reactions reported with TEGRETOL, including dizziness, drowsiness, ataxia, diplopia, impaired accommodation and blurred vision. Patients should be advised not to drive or use complex machines, or engage in other hazardous activities, until they have gained sufficient experience on carbamazepine to gauge whether it affects their mental and/or motor performance adversely.

## Endocrine and Metabolism

### *Patients with fructose intolerance*

TEGRETOL Suspension contains sorbitol and, therefore, should not be administered to patients with rare hereditary problems of fructose intolerance.

### *Hyponatremia*

Hyponatremia is known to occur with carbamazepine. Although hyponatremia occurs in 10 to 15% of patients taking carbamazepine, it is seldom symptomatic or severe enough to cause fluid retention. In patients with pre-existing renal conditions associated with low sodium or in patients treated concomitantly with sodium-lowering medicinal products (e.g. diuretics, medicinal products associated with inappropriate ADH secretion), serum sodium levels should be measured prior to initiating carbamazepine therapy. Thereafter, serum sodium levels

should be measured after approximately two weeks and then at monthly intervals for the first three months during therapy, or according to clinical need. These risk factors may apply especially to the elderly and renally-compromised patients. If hyponatremia is observed, water restriction is an important counter-measurement if clinically indicated.

#### *Hypothyroidism*

Carbamazepine can reduce serum concentrations of thyroid hormones through enzyme induction requiring an increase in dose of thyroid replacement therapy in patients with hypothyroidism. In order to adjust the dosage of thyroid replacement therapy, evaluation of thyroid hormone status should be considered for patients treated with TEGRETOL, particularly for pediatric patients, due to the potential risk of hypothyroidism and long-term adverse effects on development that can occur in relation to undetected changes in thyroid hormone status.

#### **Monitoring and Laboratory Tests**

TEGRETOL should be prescribed only after a critical risk-benefit appraisal in patients with a history of cardiac, hepatic or renal damage, adverse hematological reactions to other drugs, or interrupted courses of therapy with TEGRETOL. **Careful clinical and laboratory supervision should be maintained throughout treatment.** Should any signs or symptoms or abnormal laboratory findings be suggestive of blood dyscrasia or liver disorder, TEGRETOL should be immediately discontinued until the case is carefully reassessed.

#### *Bone marrow function*

Complete blood counts, including platelets and possibly reticulocytes and serum iron, should be carried out before treatment is instituted, and periodically thereafter.

If definitely low or decreased white blood cell or platelet counts are observed during treatment, the patient and the complete blood count should be monitored closely. Non-progressive fluctuating asymptomatic leucopenia, which is encountered, does not generally call for the withdrawal of TEGRETOL. However, treatment with TEGRETOL should be discontinued if the patient develops leucopenia which is progressive or accompanied by clinical manifestations, e.g., fever or sore throat, as this could indicate the onset of significant bone marrow depression.

**Because the onset of potentially serious blood dyscrasias may be rapid, patients should be made aware of early toxic signs and symptoms of a potential hematological problem, as well as symptoms of dermatological or hepatic reactions.** If reactions such as fever, sore throat, rash, ulcers in the mouth, easy bruising, petechial or purpuric hemorrhage appear, the patient should be advised to consult his/her physician immediately.

#### *Hepatic function*

Baseline and periodic evaluations of hepatic function must be performed, particularly in elderly patients and patients with a history of liver disease. TEGRETOL should be withdrawn immediately in cases of aggravated liver dysfunction or active liver disease.

### *Renal function*

Pre-treatment and periodic complete urinalysis and BUN determinations should be performed.

### *Ophthalmic examinations*

Carbamazepine has been associated with pathological eye changes (see [8.1 Adverse Reaction Overview, Eye disorders](#)). Periodic eye examinations, including slit-lamp funduscopy and tonometry are recommended.

### *Plasma levels*

Although correlations between dosage and plasma levels of carbamazepine, and between plasma levels and clinical efficacy or tolerability are rather tenuous, monitoring plasma levels may be useful in the following situations: dramatic increase in seizure frequency/verification of patient compliance; during pregnancy; when treating children or adolescents; in suspected absorption disorders; in suspected toxicity, especially where more than one drug is being used. See [9 DRUG INTERACTIONS](#).

## **Neurologic**

### *Increased seizure frequency*

Abrupt withdrawal of TEGRETOL may precipitate seizures. Therefore, if carbamazepine has to be discontinued, it should be withdrawn gradually over a 6-month period. In epileptic patients, the switch to the new antiepileptic compound should be made under cover of a suitable drug. See [9.4 Drug-Drug Interactions](#).

TEGRETOL should be used with caution in patients with mixed seizures which includes absences, either typical or atypical. In all these conditions, TEGRETOL may exacerbate seizures.

In the event of exacerbation of seizures, TEGRETOL should be discontinued.

The occurrence of CNS adverse reactions may be a manifestation of relative overdosage or significant fluctuation in plasma levels. In such cases, it is advisable to monitor the plasma levels.

A number of investigators have reported a deterioration of EEG abnormalities with regard to focal alterations and a higher incidence of records with nil beta-activity, during carbamazepine-combined treatment. See [14 CLINICAL TRIALS](#).

## **Psychiatric**

Because it is closely related to other tricyclic drugs, there is some possibility that carbamazepine might activate a latent psychosis, or, in elderly patients, produce agitation or confusion, especially when combined with other drugs. Caution should also be exercised in patients with alcohol dependence.

### *Suicidal ideation and behaviour*



Suicidal ideation and behaviour have been reported in patients treated with antiepileptic agents in several indications.

All patients treated with antiepileptic drugs, irrespective of indication, should be monitored for signs of suicidal ideation and behaviour and appropriate treatment should be considered. Patients (and caregivers of patients) should be advised to seek medical advice should signs of suicidal ideation or behaviour emerge.

An FDA meta-analysis of randomized placebo controlled trials, in which antiepileptic drugs were used for various indications, has shown a small increased risk of suicidal ideation and behaviour in patients treated with these drugs. The reason for this risk is not known.

There were 43892 patients treated in the placebo controlled clinical trials that were included in the meta-analysis. Approximately 75% of patients in these clinical trials were treated for indications other than epilepsy and, for the majority of non-epilepsy indications the treatment (antiepileptic drug or placebo) was administered as monotherapy. Patients with epilepsy represented approximately 25% of the total number of patients treated in the placebo controlled clinical trials and, for the majority of epilepsy patients, treatment (antiepileptic drug or placebo) was administered as adjunct to other antiepileptic agents (i.e., patients in both treatment arms were being treated with one or more antiepileptic drug). Therefore, the small increased risk of suicidal ideation and behaviour reported from the meta-analysis (0.43% for patients on antiepileptic drugs compared to 0.24% for patients on placebo) is based largely on patients that received monotherapy treatment (antiepileptic drug or placebo) for non-epilepsy indications. The study design does not allow for an estimation of the risk of suicidal ideation and behaviour for patients with epilepsy that are taking antiepileptic drugs, due both to this population being the minority in the study, and the drug-placebo comparison in this population being confounded by the presence of adjunct antiepileptic drug treatment in both arms.

#### *Risk of suicide in patients with bipolar disorder*

Patients with bipolar disorder may experience worsening of their depressive symptoms and/or the emergence of suicidal ideation and behaviors (suicidality) whether or not they are taking medications for bipolar disorder. Patients should be closely monitored for clinical worsening (including development of new symptoms) and suicidality, especially at the beginning of a course of treatment, or at the time of dose changes.

In addition, patients with a history of suicidal behavior or thoughts, those patients exhibiting a significant degree of suicidal ideation prior to commencement of treatment, and young adults, are at an increased risk of suicidal thoughts or suicide attempts, and should receive careful monitoring during treatment.

Patients (and caregivers of patients) should be alerted about the need to monitor for any worsening of their condition (including development of new symptoms) and /or the emergence of suicidal ideation/behavior or thoughts of harming themselves and to seek medical advice immediately if these symptoms present.

Prescriptions for all medications, including TEGRETOL, should be written for the smallest

quantity of tablets consistent with good patient management, in order to reduce the risk of overdose (See [4.2 Recommended Dose and Dosage Adjustment](#)).

## **Reproductive Health: Female and Male Potential**

There have been very rare reports of impaired male fertility and/or abnormal spermatogenesis.

### ***Women of child-bearing potential and contraceptive measures***

Women of childbearing potential should use effective contraception during treatment with TEGRETOL and for 2 weeks after the last dose. Due to enzyme induction, TEGRETOL may result in a failure of the therapeutic effect of oral contraceptive drugs containing estrogen and/or progesterone. Therefore, women of childbearing potential should be advised to use alternative contraceptive methods while on treatment with TEGRETOL.

**It should be noted that the reliability of oral contraceptives may be adversely affected by carbamazepine.** See 9.4 Drug-Drug Interactions, Combinations that require specific consideration.

## **Skin**

Mild skin reactions, e.g., isolated macular or maculopapular exanthema, usually disappear within a few days or weeks, either during a continued course of treatment or following a decrease in dosage. However, the patient should be kept under close surveillance because of the rare possibility of Steven-Johnson Syndrome or Toxic Epidermal Necrolysis occurring (see [3 SERIOUS WARNINGS AND PRECAUTIONS BOX](#)).

In addition to being associated with severe adverse cutaneous reactions (see [7 WARNINGS AND PRECAUTIONS, Hypersensitivity](#)), the HLA-A\*3101 allele has been found to be associated with less severe adverse cutaneous reactions from carbamazepine, and may predict the risk of such reactions as anticonvulsant hypersensitivity syndrome or non-serious rash (maculopapular eruption). However, the HLA-B\*1502 allele has not been found to predict the risk of these aforementioned skin reactions (see [7 WARNINGS AND PRECAUTIONS, Pharmacogenomics, Ancestry and Allelic Variation in the HLA-A Gene](#)).

## **7.1 Special Populations**

### **7.1.1 Pregnant Women**

#### ***Pregnancy***

Women with epilepsy who are, or intend to become pregnant, should be treated with special care.

In women of childbearing potential, TEGRETOL should, whenever possible, be prescribed as monotherapy, because the incidence of congenital abnormalities in the offspring of women treated with more than one antiepileptic drug is greater than in those of women receiving a single antiepileptic. The risk of malformations following exposure to carbamazepine as polytherapy may vary depending on the specific drugs used and may be higher in polytherapy combinations that include valproate.

If pregnancy occurs in a woman receiving TEGRETOL, or if the need to initiate TEGRETOL arises during pregnancy, the drug's expected benefits must be weighed against its hazards, particularly during the first 3 months of pregnancy. TEGRETOL should not be discontinued or withheld from patients if required to prevent major seizures because of the risks posed, to both mother and fetus, by status epilepticus with attendant hypoxia. During pregnancy, an effective antiepileptic treatment should not be interrupted, since the aggravation of the illness is detrimental to both the mother and the fetus.

The possibility that carbamazepine, like all major antiepileptic drugs, increases the risk of malformations has been reported. Developmental disorders and malformations, including spina bifida, and also other congenital anomalies, *e.g.* craniofacial defects, cardiovascular malformations, hypospadias, and anomalies involving various body systems, have been reported in association with carbamazepine.

Conclusive evidence from controlled studies with carbamazepine monotherapy is lacking. Patients should be counseled regarding the possibility of an increased risk of malformations and given the opportunity of antenatal screening.

### ***Monitoring and prevention***

Folic acid deficiency is known to occur in pregnancy. Antiepileptic drugs have been reported to aggravate folic acid deficiency. This deficiency may contribute to the increased incidence of birth defects in the offspring of treated epileptic women. Folic acid supplementation has therefore been recommended before and during pregnancy.

### ***In the neonate***

To prevent neonatal bleeding disorders, Vitamin K<sub>1</sub> administration to the mother during the last weeks of pregnancy, as well as to the newborn, has been recommended.

Cholestatic hepatitis in neonates exposed to carbamazepine in the antenatal period has been reported. Infants of mothers treated with TEGRETOL should be carefully observed for adverse hepatobiliary effects. A few cases of neonatal seizures and respiratory depression have been associated with maternal TEGRETOL and other concomitant anticonvulsant drug use. A few cases of neonatal vomiting, diarrhea, and/or decreased feeding have also been associated with maternal TEGRETOL use. These reactions may represent a neonatal withdrawal syndrome.

### 7.1.2 Breast-feeding

Carbamazepine passes into breast milk in concentrations of about 25-60% of the plasma level. No reports are available on the long-term effect of breast feeding but there have been some reports of cholestatic hepatitis in neonates exposed to carbamazepine during breast feeding. The benefits of breast feeding should be weighed against the possible risks to the infant and a decision should be made whether to discontinue nursing or to discontinue TEGRETOL, taking into account the importance of the drug to the mother. Therefore breast-fed infants of mothers treated with carbamazepine should be carefully observed for adverse reactions such as somnolence, allergic skin reactions and adverse hepatobiliary effects.

### 7.1.3 Pediatrics

**Pediatrics (< 18 years of age):** The safety and efficacy of TEGRETOL have not been studied in pediatric patients with trigeminal neuralgia and acute mania and prophylaxis in bipolar (manic-depressive) disorders. TEGRETOL is not authorized for pediatric use in trigeminal neuralgia and acute mania and prophylaxis in bipolar (manic-depressive) disorders.

### 7.1.4 Geriatrics

**Geriatrics (> 65 years of age):**

See [4.1 Dosing Considerations, Geriatrics](#)

## 8 ADVERSE REACTIONS

### 8.1 Adverse Reaction Overview

The reactions which have been most commonly reported with TEGRETOL are CNS disturbances (e.g., drowsiness, headache, unsteadiness on the feet, diplopia, dizziness), gastrointestinal disturbances (nausea, vomiting), and allergic skin reactions. These reactions usually occur only during the initial phase of therapy, if the initial dose is too high, or when treating elderly patients. They have rarely necessitated discontinuing TEGRETOL therapy, and can be minimized by initiating treatment at a low dosage.

The occurrence of CNS adverse reactions may be a manifestation of relative overdose or significant fluctuation in plasma levels. In such cases it is advisable to monitor the plasma levels.

The more serious adverse reactions observed are the hematologic, hepatic, cardiovascular and dermatologic reactions, which require discontinuation of therapy.

### Blood and lymphatic system disorders

*Very common:* leucopenia;

*Common:* eosinophilia, thrombocytopenia;

*Rare:* leucocytosis, lymphadenopathy;

*Very rare:* agranulocytosis, aplastic anemia, pancytopenia, pure red cell aplasia, anemia, macrocytic anemia, megaloblastic anemia, reticulocytosis, thrombocytopenic purpura and hemolytic anemia. In a few instances, deaths have occurred.

### **Hepatobiliary disorders**

*Rare:* hepatitis of a cholestatic, parenchymal (hepatocellular), or mixed type, vanishing bile duct syndrome, jaundice;

*Very rare:* hepatic failure, granulomatous liver disease.

### **Skin and subcutaneous tissue disorders**

*Very common:* erythematous rashes, urticaria which may be severe, allergic dermatitis and rashes;

*Uncommon:* exfoliative dermatitis;

*Rare:* systemic lupus erythematosus, pruritis;

*Very rare:* Steven Johnson syndrome (In some Asian countries also reported as rare. See [7 WARNINGS AND PRECAUTIONS](#)), toxic epidermal necrolysis (Lyell's syndrome), photosensitivity reaction, erythema multiform, erythema nodosum, pigmentation disorder, purpura, acne, diaphoresis, alopecia, neurodermatitis, hirsutism.

### **Nervous system disorders**

*Very common:* ataxia, dizziness, somnolence;

*Common:* an increase in motor seizures (see [1 INDICATIONS](#)), diplopia, headache;

*Uncommon:* abnormal involuntary movements (e.g., tremor, asterixis, dystonia, tics), nystagmus;

*Rare:* dyskinesia, paresis, eye movement disorder, speech disorders (e.g., dysarthria, slurred speech), choreoathetosis, peripheral neuropathy, paraesthesia, muscle weakness;

*Very rare:* neuroleptic malignant syndrome, aseptic meningitis with myoclonus and peripheral eosinophilia, dysgeusia.

### **Cardiac disorders**

*Rare:* cardiac conduction disorders (including second and third degree atrioventricular heart block);

*Very rare:* arrhythmias, Stokes-Adams in patients with atrioventricular block, bradycardia, congestive cardiac failure, aggravated coronary artery disease. Some of these cardiovascular complications have had fatal outcomes. Myocardial infarction and arrhythmia have been

associated with other tricyclic compounds.

### **Vascular disorders**

*Rare:* hypertension or hypotension;

*Very Rare:* circulatory collapse, thromboembolism (e.g. pulmonary embolism), thrombophlebitis.

### **Psychiatric disorders**

*Rare:* hallucinations (visual or auditory), depression, talkativeness, agitation, anorexia, restlessness, confusional state;

*Very rare:* activation of psychosis. Very rare cases of suicide attempt and completed suicide have been reported, however a causal relationship has not been established.

### **Renal and urinary disorders**

*Very rare:* tubulointerstitial nephritis, renal failure, renal impairment (e.g., albuminuria, glycosuria, hematuria, oliguria sometimes associated with elevated blood pressure, and blood urea nitrogen increased/azotemia), urinary retention, urinary frequency.

### **Reproductive system**

*Very rare:* sexual dysfunction/erectile dysfunction, spermatogenesis abnormal (with decreased sperm count and/or motility).

### **Gastrointestinal disorders**

*Very common:* vomiting, nausea;

*Common:* dry mouth and throat;

*Uncommon:* diarrhea, constipation;

*Rare:* abdominal pain;

*Very rare:* pancreatitis, glossitis, stomatitis;

### **Eye disorders**

*Common:* accommodation disorders (e.g. blurred vision);

*Very rare:* lenticular opacities, conjunctivitis, retinal changes.

### **Ear and labyrinth disorders**

*Very rare:* hearing disorders (e.g. tinnitus, hyperacusis, hypoacusis), change in pitch

perception.

### **Endocrine disorders**

*Common:* edema, fluid retention, weight increase, hyponatremia and blood osmolarity decreased due to antidiuretic hormone (ADH)-like effect occurs, leading in rare cases to water intoxication accompanied by lethargy, vomiting, headache, confusional state, neurological disorders;

*Very rare:* galactorrhea, gynecomastia.

### **Metabolism and nutrition disorders**

*Rare:* folate deficiency, decreased appetite;

*Very rare:* acute porphyria (acute intermittent porphyria and variegate porphyria), non-acute porphyria (porphyria cutanea tarda).

### **Musculoskeletal, connective tissue and bone disorders**

*Very rare:* bone metabolism disorders (decrease in plasma calcium and blood 25-hydroxy-cholecalciferol) leading to osteomalacia/osteoporosis, arthralgia, myalgia, muscle spasms.

### **Respiratory, thoracic and mediastinal system**

*Very rare:* pulmonary hypersensitivity characterized by fever, dyspnea, pneumonitis or pneumonia.

### **Immune system disorders**

*Rare:* DRESS; delayed multi-organ hypersensitivity disorder with fever, rashes, vasculitis, lymphadenopathy, pseudo lymphoma, arthralgia, leucopenia, eosinophilia, hepatosplenomegaly, abnormal liver function tests and vanishing bile duct syndrome (destruction and disappearance of the intrahepatic bile ducts), occurring in various combinations. Other organs may also be affected (e.g., lungs, kidneys, pancreas, myocardium, colon);

*Very rare:* anaphylactic reaction, angioedema, hypogammaglobulinemia.

### **General disorders and administration site conditions**

*Very common:* fatigue.

### **Investigations**

*Very common:* increased gamma-glutamyltransferase (due to hepatic enzyme induction), usually not clinically relevant;

*Common:* increased blood alkaline phosphatase;

*Uncommon:* increased transaminases;

*Very rare:* increased intraocular pressure, increased blood cholesterol, increased high density lipoprotein, increased blood triglycerides. Abnormal thyroid function test: decreased L-Thyroxin (free thyroxine, thyroxine, tri-iodothyronine) and increased blood thyroid stimulating hormone, increased blood prolactin (usually without clinical manifestations).

## 8.2 Clinical Trial Adverse Reactions

The clinical trial data on which the original indication was authorized is not available.

## 8.5 Post-Market Adverse Reactions

The following adverse drug reactions have been derived from post-marketing experience with TEGRETOL via spontaneous case reports and literature cases. Because these reactions are reported voluntarily from a population of uncertain size, it is not possible to reliably estimate their frequency, which is therefore categorized as not known. Adverse drug reactions are listed according to system organ classes in MedDRA. Within each system organ class, adverse drug reactions (ADRs) are presented in order of decreasing seriousness.

**Blood and lymphatic system disorders:** bone marrow failure.

**Gastrointestinal disorders:** colitis.

**Immune system disorders:** Drug Reaction with Eosinophilia and Systemic Symptoms (DRESS).

**Infections and infestations:** reactivation of human herpesvirus 6 infection.

**Injury, poisoning and procedural complications:** fall (associated with TEGRETOL-induced ataxia, dizziness, somnolence, hypotension, confusional state, sedation). See [7 WARNINGS and PRECAUTIONS, General, Falls](#).

**Investigations:** bone density decreased.

**Musculoskeletal, connective tissue and bone disorders:** fracture.

**Nervous system disorders:** sedation, memory impairment.

**Skin and subcutaneous tissue disorders:** Acute Generalized Exanthematous Pustulosis (AGEP), lichenoid keratosis, onychomadesis.

## 9 DRUG INTERACTIONS

### 9.1 Serious Drug Interactions

#### Serious Drug Interactions

TEGRETOL is contraindicated in:

- Conjunction with, or immediately after, a monoamine oxidase (MAO) inhibitor. See [9.4 Drug-](#)



[Drug Interactions.](#)

- Conjunction with itraconazole and voriconazole. See [9.4 Drug-Drug Interactions.](#)

## 9.2 Drug Interactions Overview

Cytochrome P450 3A4 (CYP3A4) is the main enzyme responsible for metabolizing carbamazepine.

### Enzyme Inhibition

Co-administration of CYP3A4 inhibitors may increase carbamazepine plasma concentrations and induce adverse reactions.

Human microsomal epoxide hydrolase has been identified as the enzyme responsible for the formation of the 10,11-transdiol derivative from carbamazepine-10,11 epoxide. Co-administration of inhibitors of human microsomal epoxide hydrolase may result in increased carbamazepine-10,11 epoxide plasma concentrations. See [9.4 Drug-Drug Interactions, Agents that may raise carbamazepine and/or carbamazepine-10,11-epoxide plasma levels](#), and [9.5 Drug-Food Interactions.](#)

### Enzyme Induction

Co-administration of CYP3A4 inducers may increase the rate of carbamazepine metabolism leading to potential decreases in the carbamazepine serum levels and therapeutic effect. Alternatively, discontinuation of a CYP3A4 inducer may decrease the rate of metabolism of carbamazepine, leading to an increase in carbamazepine plasma levels. See [9.4 Drug-Drug Interactions, Agents that may decrease carbamazepine plasma levels.](#)

Carbamazepine is a potent inducer of CYP3A4 and other phase I and phase II enzyme systems in the liver, and may therefore reduce plasma concentrations of co-medications mainly metabolized by CYP3A4 by induction of their metabolism.

## 9.3 Drug-Behavioural Interactions

Carbamazepine, like other psycho-active drugs, may reduce the patient's alcohol tolerance; it is therefore advisable to abstain from alcohol consumption during treatment.

Caution should also be exercised in patients with alcohol dependence.

## 9.4 Drug-Drug Interactions

### Effects of TEGRETOL on Plasma Levels of Concomitant Agents

Carbamazepine may lower the plasma level, or diminish or even abolish the activity of certain drugs. The dosage of the following drugs may have to be adjusted to clinical requirements when administered with TEGRETOL:

*Analgesics, anti-inflammatory agents:* buprenorphine, methadone, paracetamol (long term administration of carbamazepine and paracetamol (acetaminophen) may be associated with hepatotoxicity), phenazone (antipyrine), tramadol.

*Antibiotics:* doxycycline, rifabutin.

*Anticoagulants:* oral anticoagulants (warfarin, phenprocoumon, dicoumarol, acenocoumarol rivaroxaban, dabigatran, apixaban, edoxaban).

*Antidepressants:* bupropion, citalopram, mianserin, nefazodone, sertraline, trazodone, tricyclic antidepressants (e.g. imipramine, amitriptyline, nortriptyline, clomipramine).

*Antiemetics:* aprepitant.

*Antiepileptics:* oxcarbazepine, clobazam, clonazepam, ethosuximide, primidone, valproic acid, felbamate, lamotrigine, eslicarbazepine, zonisamide tiagabine, topiramate. Phenytoin plasma levels have been reported both to be raised and lowered by carbamazepine. Phenytoin has also been shown to decrease carbamazepine plasma levels. To avoid phenytoin intoxication and subtherapeutic concentrations of carbamazepine, it is recommended to monitor the plasma concentration of both drugs during titration and adjust dosage accordingly. Mephenytoin plasma levels have been reported in rare instances to increase.

*Antifungals:* caspofungin, itraconazole, voriconazole. TEGRETOL should not be used in combination with voriconazole or itraconazole. See [2 CONTRAINDICATIONS](#).

*Anthelmintics:* praziquantel, albendazole.

*Antineoplastics:* imatinib, irinotecan, gefitinib, cyclophosphamide, lapatinib, temsirolimus.

*Antipsychotics:* clozapine, haloperidol and bromperidol, olanzapine, quetiapine, risperidone, ziprasidone, aripiprazole, paliperidone.

*Antivirals:* protease inhibitors for HIV treatment (e.g. indinavir, ritonavir, saquinavir), the antiretroviral agent delavirdine.

*Anxiolytics:* alprazolam, midazolam.

*Bronchodilators or anti-asthma drugs:* theophylline.

*Contraceptives:* hormonal contraceptives.

*Cardiovascular drugs:* calcium channel blockers (dihydropyridine group), e.g. felodipine, digoxin, disopyramide, quinidine, propranolol, simvastatin, atorvastatin, lovastatin, ivabradine.

*Corticosteroids:* corticosteroids (e.g., prednisolone, dexamethasone).

*Drugs used in erectile dysfunction:* tadalafil.

*Immunosuppressants:* cyclosporin, everolimus, tacrolimus, sirolimus.

*Thyroid agents:* levothyroxine.

*Other drug interactions:* products containing estrogens and/or progesterones.

### **Agents that may raise carbamazepine and/or carbamazepine-10,11-epoxide plasma levels**

Since an increase in carbamazepine and/or carbamazepine-10,11-epoxide plasma levels may result in adverse reactions (e.g., dizziness, drowsiness, ataxia, diplopia), the dosage of TEGRETOL should be adjusted accordingly and the blood levels monitored when used concomitantly with the substances described below:

*Analgesics, anti-inflammatory drugs:* dextropropoxyphene, ibuprofen.

*Androgens:* danazol.

*Antibiotics:* macrolide antibiotics (e.g. erythromycin, troleandomycin, josamycin, clarithromycin, telithromycin), ciprofloxacin.

*Antidepressants:* possibly desipramine, fluoxetine, fluvoxamine, nefazodone, paroxetine, trazodone, viloxazine.

*Antiepileptics:* stiripentol, vigabatrin.

*Antifungals:* azoles (itraconazole, ketoconazole, fluconazole, voriconazole). TEGRETOL should not be used in combination with voriconazole or itraconazole. See [2 CONTRAINDICATIONS](#).

*Antihistamines:* terfenadine, loratadine.

*Antipsychotics:* loxapine, olanzapine, quetiapine.

*Antituberculosis:* isoniazid.

*Antivirals:* protease inhibitors for HIV treatment (e.g. ritonavir).

*Carbonic anhydrase inhibitors:* acetazolamide.

*Cardiovascular drugs:* verapamil, diltiazem.

*Gastrointestinal drugs:* cimetidine, omeprazole.

*Muscle relaxants:* oxybutynin, dantrolene.

*Platelet aggregation inhibitors:* ticlopidine.

*Other interactions:* nicotinamide, niacinamide.

Loxapine, felbamate, quetiapine, primidone, valproic acid and valpromide were reported to increase concentration of the active metabolite carbamazepine-10,11-epoxide.

### **Agents that may decrease carbamazepine plasma levels**

The dose of TEGRETOL may consequently have to be adjusted when used concomitantly with the substances described below:

*Antiepileptics:* felbamate (might decrease the carbamazepine serum concentration associated with an increase in carbamazepine-10,11-epoxide levels, and might decrease the serum felbamate levels), methsuximide, oxcarbazepine, phenobarbital, phensuximide, phenytoin (to avoid phenytoin intoxication and subtherapeutic concentrations of carbamazepine, it is recommended to monitor the plasma concentration of both drugs during titration (see also [9.4 Drug-Drug Interactions, Effects of TEGRETOL on Plasma Levels of Concomitant Agents](#))) and fosphenytoin, primidone, progabide, and possibly by clonazepam, valproic acid or valpromide.

*Antineoplastics:* cisplatin or doxorubicin.

*Antituberculosis:* rifampicin.

*Bronchodilators or anti-asthma drugs:* theophylline, aminophylline.

*Dermatological drugs:* isotretinoin.

### **Combinations that require specific consideration**

Concomitant use of carbamazepine and levetiracetam has been reported to increase carbamazepine-induced toxicity (e.g., nystagmus, nausea, vomiting).

Combined use of TEGRETOL with lithium, metoclopramide, or haloperidol, may increase the risk of neurotoxic side effects (even in the presence of "therapeutic plasma levels").

Concomitant use of TEGRETOL and isoniazid has been reported to increase isoniazid-induced hepatotoxicity.

TEGRETOL, like other anticonvulsants, may adversely affect the reliability of hormonal contraceptives; breakthrough bleeding may occur. Accordingly, patients should be advised to use some alternative, non-hormonal method of contraception while taking TEGRETOL. Due to enzyme induction, TEGRETOL may result in a failure of the therapeutic effect of oral contraceptive drugs containing estrogen and/or progesterone (e.g. failure of contraception).

Concomitant medication with TEGRETOL and some diuretics (hydrochlorothiazide, furosemide) may lead to symptomatic hyponatremia.

Carbamazepine may antagonize the effects of non-depolarising muscle relaxants (e.g., pancuronium); their dosage may need to be raised and patients should be monitored closely for more rapid recovery from neuromuscular blockade than expected.

Isotretinoin has been reported to alter the bioavailability and/or clearance of carbamazepine and carbamazepine 10,11-epoxide; carbamazepine plasma levels should be monitored.

The use of TEGRETOL in combination with MAO inhibitors (MAOIs) is contraindicated. Before administering TEGRETOL, MAOIs should be discontinued for a minimum of 2 weeks, or longer, if the clinical situation permits. See [2 CONTRAINDICATIONS](#).

Concomitant use of carbamazepine with direct acting oral anti-coagulants (rivaroxaban, dabigatran, apixaban, and edoxaban) may lead to reduced plasma concentrations of direct acting oral anti-coagulants, which carries the risk of thrombosis. Therefore, if a concomitant use is necessary, close monitoring of signs and symptoms of thrombosis is recommended.

## 9.5 Drug-Food Interactions

**Agents that may raise carbamazepine and/or carbamazepine-10,11-epoxide plasma levels:** grapefruit juice.

## 9.6 Drug-Herb Interactions

**Agents that may decrease carbamazepine plasma levels:** herbal preparations containing St John's wort (*Hypericum perforatum*).

## 9.7 Drug-Laboratory Test Interactions

### Interference with serological testing

Carbamazepine may result in false positive perphenazine concentrations in High Performance Liquid Chromatography (HPLC) analysis due to interference.

Carbamazepine and the 10,11-epoxide metabolite may result in false positive tricyclic antidepressant concentration in fluorescence polarized immunoassay method.

## 10 CLINICAL PHARMACOLOGY

### 10.1 Mechanism of Action

Not known at the time of authorization.

### 10.2 Pharmacodynamics

Carbamazepine has anticonvulsant properties which have been found useful in the treatment

of partial seizures (simple or complex) with and without secondary generalization, and generalized tonic-clonic seizures. A mild psychotropic effect has been observed in some patients, which seems related to the effect of carbamazepine in localization-related epilepsies and syndromes.

### 10.3 Pharmacokinetics

#### Absorption

The absorption of carbamazepine is relatively slow. When taken in a single oral dose, TEGRETOL tablets) yield peak plasma concentrations of unchanged carbamazepine within 4-24 hours. With respect to the quantity of carbamazepine absorbed, there is no clinically relevant difference between the various dosage forms. However, TEGRETOL Suspension is absorbed somewhat faster than the tablet; peak plasma levels are reached within 2 hours. Following BID dosage regimens, higher peak levels and lower trough levels are obtained with the suspension than with the tablets. Steady-state plasma levels are comparable for TEGRETOL Suspension given TID and TEGRETOL (tablets) given BID, when administered at the same total daily dose.

Ingestion of food has no significant influence on the rate and extent of absorption regardless of the dosage form of TEGRETOL.

When TEGRETOL CR are administered repeatedly, they yield a lower average maximal concentration of carbamazepine in the plasma, without a reduction in the average minimal concentration. This tends to result in a lower incidence of intermittent concentration-dependent adverse drug reactions. It also ensures that the plasma concentrations remain largely stable throughout the day, thereby making it possible to manage with a twice-daily dosage.

In patients with epilepsy, the therapeutic range for the steady-state plasma concentration of carbamazepine generally lies between 4-10 mcg/mL.

#### Distribution

Carbamazepine becomes bound to serum proteins to the extent of 70-80%. The concentration of unchanged substance in the saliva reflects the non-protein-bound portion present in the serum (20-30%).

#### Metabolism

Carbamazepine is catabolized into its primary pharmacologically active metabolite, carbamazepine-10,11 epoxide, which is then further metabolized primarily into carbamazepine 10,11-transdiol. A small portion of the carbamazepine-10,11 epoxide is also converted into 9-hydroxymethyl-10-carbamoyl-acridan. Additional biotransformation products include various monohydroxylated compounds and the N-glucuronide of carbamazepine produced by UGT2B7.

The elimination half-life of unchanged carbamazepine in plasma averages approximately 36 hours following a single oral dose. Repeated administration leads to autoinduction of

hepatic enzymes and an elimination half-life of only 16-24 hours, depending on the length of the treatment. In patients receiving concomitant treatment with other enzyme-inducing antiepileptic agents, half-life values averaging 9-10 hours have been found. The mean elimination half-life of carbamazepine-10,11 epoxide in the plasma is about 6 hours following single oral doses of the epoxide itself.

### **Elimination**

Only 2-3% of carbamazepine, whether administered as a single or in repeated doses, is excreted in the urine in an unchanged form. Approximately 30% of carbamazepine is renally eliminated via the carbamazepine-10,11 epoxide pathway with carbamazepine 10,11-trans-diol as the main urinary metabolite.

### **Special Populations and Conditions**

- **Geriatrics:** Due to drug interactions and different antiepileptic drug pharmacokinetics, the dosage of TEGRETOL should be selected with caution in elderly patients.
- **Pediatrics:** One study in 39 children (aged 3-10 years) and 79 adults (aged 15-65 years), suggests that carbamazepine elimination may be slightly enhanced in children. This data suggests that children may require higher doses of carbamazepine (in mg/kg) than adults.
- **Hepatic Insufficiency:** No data are available on the pharmacokinetics of carbamazepine in patients with any degree of hepatic impairment.
- **Renal Insufficiency:** No data are available on the pharmacokinetics of carbamazepine in patients with any degree of renal impairment.

## **11 STORAGE, STABILITY AND DISPOSAL**

TEGRETOL (tablets): Store at 15-25°C, protect from humidity.

TEGRETOL CR: Store below 25°C, protect from humidity.

TEGRETOL Suspension: Store below 30°C, protect from humidity and light.

TEGRETOL must be kept out of the reach and sight of children.

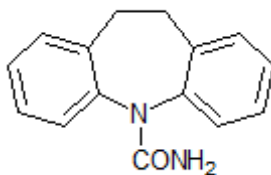
There is no specific instruction for disposal.

## PART II: SCIENTIFIC INFORMATION

### 13 PHARMACEUTICAL INFORMATION

#### Drug Substance

Proper name:	carbamazepine
Chemical name:	5H-dibenzo(b,f)azepine-5carboxamide
Molecular formula and molecular mass:	C <sub>15</sub> H <sub>12</sub> N <sub>2</sub> O and 236.27
Structural formula:	



Physicochemical properties:	White to off-white powder
Solubility:	Practically insoluble in water and in acetone

### 14 CLINICAL TRIALS

The clinical trial data on which the original indication was authorized is not available.

#### 14.1 Trial Design and Study Demographics

Evidence supporting the efficacy of TEGRETOL as an anticonvulsant was derived from active drug-controlled studies that enrolled patients with the following seizure types:

1. Partial seizures with simple or complex symptomatology.
2. Generalized tonic-clonic seizures.
3. Mixed seizure patterns which include the above, or other partial or generalized seizures.

#### 14.2 Study Results

Carbamazepine relieves or diminishes the pain associated with trigeminal neuralgia often within 24 to 48 hours.

Carbamazepine given as a monotherapy or in combination with lithium or neuroleptics has been found useful in the treatment of acute mania and the prophylactic treatment of bipolar (manic-depressive) disorders.

A tolerance may develop to the action of carbamazepine after a few months of treatment and should be watched for.



## 15 MICROBIOLOGY

No microbiological information is required for this drug product.

## 16 NON-CLINICAL TOXICOLOGY

### Detailed Pharmacology

When administered to mice by the oral route at the dose level of 100 mg/kg, carbamazepine protected all animals against electroshock-induced convulsions (50 mA for 0.2 seconds) for up to 5 hours. In rats, at 50 mg/kg orally, the convulsive threshold was increased by 88%, and at the dosage of 100 mg/kg, carbamazepine increased the convulsive threshold by about 130%. On the other hand, very minimal effects were noted when carbamazepine was given to mice challenged with picrotoxin and it did not block pentylenetetrazol-induced convulsions.

Carbamazepine has slight sedative and tranquilizing effects in mice but no hypnotic effect except at almost toxic doses. Although intact and spinal animals are influenced in the same way as by muscle relaxants, carbamazepine has no clinically significant muscle relaxant action. In animals, carbamazepine has only a slight anticholinergic effect and no antiemetic activity. Carbamazepine did not inhibit monoamine oxidase in the guinea pig liver at the drug concentration of  $1 \times 10^{-3}$ M.

In rabbits, carbamazepine administered intravenously could not be given in a dosage sufficient to produce a Stage IV anesthesia (Magnus and Girndt) without toxic effects. Hence, the anesthetic potential is considered nil.

In experimental animals, carbamazepine depresses certain pain reflexes that are mediated by cranial nerves, such as the linguomandibular and infraorbital reflexes. There is no general analgesic effect and non-specific cutaneous pain is not modified by carbamazepine, except at very high doses. In humans, the effect of carbamazepine upon trigeminal or glossopharyngeal pain is probably largely due to blocking of bulbar, thalamic and higher synapses.

In experimental animals, carbamazepine is rapidly absorbed and rapidly equilibrated between the blood and tissues. It does not accumulate in tissues other than adipose tissue. In the rabbit, carbamazepine is rapidly metabolized and excreted so that blood and tissue levels are very low within 24 hours. Only about 2% is excreted unchanged in the urine.

### Toxicology

#### Acute Toxicity

In mice, the oral LD<sub>50</sub> of carbamazepine is between 1100 and 3750 mg/kg; in rats, 3850-4025 mg/kg; in rabbits, 1500-2680 mg/kg; in guinea pigs, about 920 mg/kg; and in dogs, more than 5620 mg/kg.

The principal toxic effects in these species were laboured breathing, ataxia, clonic and tonic convulsions, and coma. In dogs, toxic doses of carbamazepine induced severe vomiting and defecation, in addition to disturbance of locomotor function.

### **Subacute and Chronic Toxicity**

Subacute and chronic toxicity studies have been carried out on carbamazepine for up to one year at dosage levels of 50, 100, 200 and 400 mg/kg in rats and 50, 100, 150 and 200 mg/kg in the dog. In rats, at 100 and 200 mg/kg/day and above, there was evidence of hepatotoxicity including a slight increase in ALT and histological changes in the liver. At a dosage of 400 mg/kg/day, 25 of 50 animals died, beginning at the 15th week. ALT and BUN levels were slightly increased. The relative organ/body weight ratios were increased for the heart, liver and kidneys.

### **Carcinogenicity and Genotoxicity**

Carbamazepine, when administered to Sprague-Dawley rats for 2 years in the diet at doses of 25, 75 and 250 mg/kg/day, resulted in a dose-related increase in the incidence of hepatocellular tumors in females and in benign interstitial cell adenomas in the testes of males. Carbamazepine must, therefore, be considered to be carcinogenic in Sprague-Dawley rats. Carbamazepine was not found to be genotoxic in various standard bacterial and mammalian mutagenicity studies. The carcinogenicity findings in rats are considered to be not relevant to the use of carbamazepine in humans.

Testicular atrophy and deficient spermatogenesis were observed in a four week oral study with carbamazepine in the rat at 100 mg/kg/day, but were not observed in animals dosed with 200, 500 and 1000 mg/kg/day. In a 24 week study in rats, evidence of testicular atrophy was observed in 3 of 10 animals at 50 mg/kg/day and in one of 10 at 100 mg/kg/day, but no testicular damage was observed at 200 mg/kg/day. In a one year study, inhibition of spermatogenesis and testicular atrophy were noted in 6 of 19 surviving male rats receiving 400 mg/kg/day.

In dogs, there were some macroscopic gray or brownish discolorations of urinary bladders at 100 and 200 mg/kg/day in a 3 month study and at all dose levels (50, 100 and 150 mg/kg/day) in a one year study. Histologically, the brownish pigment was found in the macrophages in the submucosa. The pigment is considered to be a non-toxic metabolite rather than melanin or argentaaffin. In one dog, there was minimal hepatic damage after 12 months.

### **Reproductive Toxicity**

In the course of reproductive studies with carbamazepine in rats and rabbits, approximately 1% of the offspring were listed as having some anomaly.

In the reproductive study in rats, two of the offspring showed kinked ribs bilaterally at doses of 250 mg/kg and 4 animals had cleft palates and talipes at 650 mg/kg. Two of the latter also had anophthalmos. In mice and rats, carbamazepine, when given parenterally, produced a low but nevertheless definite incidence of anomalies including anencephalia, anophthalmos, cleft palates and rudimentary or absent tails. In one study using mice, carbamazepine (40-240 mg/kg body weight daily, orally) caused defects (mainly dilatation of cerebral ventricles) in 4.7% of exposed fetuses as compared with 1.3% in controls).

In nursing rats, toxicity was demonstrated by lack of weight gain at the dose level of 200 g/kg.

## **PATIENT MEDICATION INFORMATION**

### **READ THIS FOR SAFE AND EFFECTIVE USE OF YOUR MEDICINE**

**<sup>Pr</sup>TEGRETOL<sup>®</sup>, <sup>Pr</sup>TEGRETOL<sup>®</sup> CR, <sup>Pr</sup>TEGRETOL<sup>®</sup> Suspension**

**carbamazepine tablets, carbamazepine controlled-release tablets, carbamazepine suspension**

Read this carefully before you start taking **TEGRETOL, TEGRETOL CR or TEGRETOL Suspension** and each time you get a refill. This leaflet is a summary and will not tell you everything about this drug. Talk to your healthcare professional about your medical condition and treatment and ask if there is any new information about **TEGRETOL, TEGRETOL CR or TEGRETOL Suspension**.

### Serious Warnings and Precautions

- **Blood:** Serious side effects affecting blood cell counts have been reported in patients taking TEGRETOL, TEGRETOL CR and TEGRETOL Suspension. These side effects are very rare but have been fatal. Other side effects that may happen with taking TEGRETOL, TEGRETOL CR or TEGRETOL Suspension include: low white blood cell count, bone marrow depression and liver problems, including liver failure. Your healthcare professional will do blood tests and frequent exams while you are taking TEGRETOL, TEGRETOL CR or TEGRETOL Suspension to watch for signs of these serious side effects. If you experience any of the following symptoms, contact your healthcare professional immediately:
  - signs of infections (fever, sore throat, rash, ulcers in the mouth, swollen glands)
  - signs of liver problems (yellowing of the skin or eyes, dark urine, abdominal pain, nausea, vomiting, loss of appetite)
  - weakness, fatigue
  - easy bruising, bleeding of the nose, gums or mouth, tiny red spots on the skin
  - shortness of breath
  - pale skin, lips and nail beds
- **Skin:** Serious and sometimes fatal skin reactions known as Toxic Epidermal Necrolysis (TEN) and Stevens-Johnson Syndrome (SJS), have been reported in patients taking TEGRETOL, TEGRETOL CR and TEGRETOL Suspension. Other serious skin reactions such as Drug Reaction with Eosinophilia and Systemic Symptoms (DRESS), Acute Generalized Exanthematous Pustulosis (AGEP) and Maculopapular Rash have also been reported. Although very rare, serious forms of DRESS and AGEP may also lead to death. Some cases of these skin reactions have been genetically linked. Your healthcare professional may recommend a blood test to see if you are at risk before you start taking TEGRETOL, TEGRETOL CR or TEGRETOL Suspension. If you experience any of the following symptoms, contact your healthcare professional immediately:
  - a rash or any serious skin reactions such as red skin, blistering of the lips, eyes or mouth, and skin peeling accompanied by fever
  - swollen glands
  - joint pain
  - enlargement of the liver and/or the spleen with symptoms such as flu-like feeling, yellowing of the skin or eyes
  - problems related to the lungs, kidneys, pancreas, heart, bone marrow, thymus, and colon with symptoms such as shortness of breath, dry cough, chest pain or discomfort, feeling thirsty, urinating less often
- **Cancer:** Taking TEGRETOL, TEGRETOL CR or TEGRETOL Suspension may increase your risk of developing certain cancers. Before taking TEGRETOL, TEGRETOL CR or TEGRETOL Suspension, discuss the potential benefits and possible risks of this treatment with your healthcare professional.

### What are TEGRETOL, TEGRETOL CR and TEGRETOL Suspension used for?

TEGRETOL, TEGRETOL CR and TEGRETOL Suspension are used in adults to treat:

- **Epilepsy:** TEGRETOL, TEGRETOL CR and TEGRETOL Suspension can be used alone or with other anticonvulsant drugs to reduce the number of seizures you experience.
- **Trigeminal Neuralgia:** TEGRETOL, TEGRETOL CR and TEGRETOL Suspension relieves the pain of trigeminal neuralgia. TEGRETOL, TEGRETOL CR and TEGRETOL Suspension should not be used to relieve trivial pain in the face or headaches.
- **Mania and Bipolar Disorders:** TEGRETOL, TEGRETOL CR and TEGRETOL Suspension can be used alone or together with the medicine lithium to treat acute mania or bipolar disorder. TEGRETOL, TEGRETOL CR and TEGRETOL Suspension can be used if you are unable to take other antimanic drugs or do not respond to them.

### How do TEGRETOL, TEGRETOL CR and TEGRETOL Suspension work?

TEGRETOL, TEGRETOL CR and TEGRETOL Suspension belong to the family of medicines called anticonvulsants for treating epilepsy. TEGRETOL, TEGRETOL CR and TEGRETOL Suspension are also used for treating the pain of trigeminal neuralgia and for treating mania.

### What are the ingredients in TEGRETOL, TEGRETOL CR and TEGRETOL Suspension?

Medicinal ingredient: carbamazepine

Non-medicinal ingredients:

- **TEGRETOL:** carmellose sodium, cellulose compounds, magnesium stearate, silicon dioxide.
- **TEGRETOL CR:** acrylic esters, castor oil derivative, carmellose sodium, cellulose compounds, iron oxides, magnesium stearate, silicon dioxide, talc, titanium dioxide.
- **TEGRETOL Suspension:** citric acid, citrus-vanilla flavour, FD&C Yellow No. 6, pluronic polyol, potassium sorbate, propylene glycol, sucrose, sorbitol, water, xanthan gum.

### TEGRETOL, TEGRETOL CR and TEGRETOL Suspension come in the following dosage forms:

- **TEGRETOL** tablets; 200 mg
- **TEGRETOL CR:** controlled-release tablets; 200 mg, 400 mg
- **TEGRETOL Suspension:** oral suspension; each 5 mL (1 measure) contains 100 mg carbamazepine

### Do not use TEGRETOL, TEGRETOL CR or TEGRETOL Suspension if you:

- are allergic (hypersensitive) to carbamazepine, tricyclic drugs (such as amitriptyline, trimipramine, imipramine), or to any of the other ingredients of TEGRETOL, TEGRETOL CR or TEGRETOL Suspension (See **What the non-medicinal ingredients are**)
- have severe heart disease (heart block).

- have liver disease.
- have a history of bone marrow depression.
- have had serious blood illnesses in the past.
- have a disturbance in the production of porphyrin, a pigment important for liver function and blood formation (also called hepatic porphyria).
- are also taking, or have recently taken, medicines belonging to a special group of antidepressants called monoamine-oxidase inhibitors (MAOIs). You should not take TEGRETOL, TEGRETOL CR or TEGRETOL Suspension within 14 days of taking a MAOI.
- are also taking itraconazole or voriconazole, medicines used to treat fungal infections.
- have a rare hereditary problem of fructose intolerance as TEGRETOL Suspension contains sorbitol.

**To help avoid side effects and ensure proper use, talk to your healthcare professional before you take TEGRETOL, TEGRETOL CR or TEGRETOL Suspension. Talk about any health conditions or problems you may have, including if you:**

- have or have had any liver, kidney, heart or thyroid problems.
- have kidney problems associated with low levels of sodium in the blood or if you have kidney problems and you are also taking certain medicines that lower sodium blood levels (diuretics or “water pills” such as hydrochlorothiazide, furosemide).
- have any blood disorders (including those caused by other medicines).
- are taking delavirdine, a medicine used to treat HIV-1 infection.
- have ever shown any unusual sensitivity (rash or other signs of allergy) to oxcarbazepine or other drugs used to treat your condition. It is important to note that if you are allergic to TEGRETOL, TEGRETOL CR or TEGRETOL Suspension (carbamazepine), there is an approximately 1 in 4 (25%) chance that you could also have an allergic reaction to oxcarbazepine.
- get irregular vaginal bleeding or spotting.
- have increased pressure in the eye (glaucoma).
- have difficulty passing urine (urinary retention).

**Other warnings you should know about:**

**Mental Health Problems and Thoughts of Suicide:** Tell your healthcare professional if you have any mental health problems, including psychosis, agitation or confusion (especially in the elderly) or if you have ever had thoughts of harming or killing yourself. A small number of patients taking antiepileptic drugs, including TEGRETOL, TEGRETOL CR and TEGRETOL Suspension, have had suicidal thoughts or behaviours. This might be more likely to happen when you first start taking TEGRETOL, TEGRETOL

CR or TEGRETOL Suspension or when your dose is changed. Get immediate medical help if you, or someone you are caring for, has thoughts of suicide or suicidal behaviours.

**Increase in Seizures:** If you are taking TEGRETOL, TEGRETOL CR or TEGRETOL Suspension for epilepsy and you experience an increase in the number of seizures you are having, contact your healthcare professional immediately.

**Falls:** TEGRETOL, TEGRETOL CR and TEGRETOL Suspension may cause lack of coordination, dizziness, drowsiness, low blood pressure, confusion and sedation which may lead to falls, fractures and other injuries. This risk can be increased if you have other diseases, medical conditions or take other medications. Talk to your healthcare professional if you have questions about this.

**Bone Mineral Density:** Talk to your healthcare professional if you have, or have a family history, of bone disease or if you have taken antiepileptics (such as phenobarbital, phenytoin, primidone, oxcarbazepine, lamotrigine, sodium valproate and/or carbamazepine) for a prolonged period of time. Long-term use of antiepileptics, including TEGRETOL, TEGRETOL CR and TEGRETOL Suspension, can lead to weakened or brittle bones.

**Eye Problems:** TEGRETOL, TEGRETOL CR and TEGRETOL Suspension can cause eye problems. Periodic eye exams are recommended while you are taking TEGRETOL, TEGRETOL CR or TEGRETOL Suspension.

**Alcohol:** You should not drink alcohol while taking TEGRETOL, TEGRETOL CR or TEGRETOL Suspension. Talk to your healthcare professional about your alcohol consumptions and if you have a history of alcohol dependence.

TEGRETOL Suspension contains sorbitol which may cause stomach upset and diarrhea.

#### **Fertility, Birth Control, Pregnancy and Breastfeeding:**

- **Female Patients:**

- Avoid becoming pregnant while taking TEGRETOL, TEGRETOL CR and TEGRETOL Suspension. They may harm your unborn baby. Babies born to mothers who took TEGRETOL, TEGRETOL CR or TEGRETOL Suspension during pregnancy are at risk of serious side effects.
- Tell your healthcare professional immediately if you become pregnant or think you might be pregnant.
- Use highly effective birth control if you can get pregnant while taking TEGRETOL, TEGRETOL CR or TEGRETOL Suspension and for 2 weeks after your last dose.
- If you are using oral hormonal birth control (such as “The Pill”) it might not work while you are taking TEGRETOL, TEGRETOL CR or TEGRETOL Suspension. Taking TEGRETOL, TEGRETOL CR or TEGRETOL Suspension while on oral birth control might also cause irregular periods. You must use a different or an additional non-hormonal method of birth control

while you are taking TEGRETOL, TEGRETOL CR or TEGRETOL Suspension. Talk to your healthcare professional about the birth control options that are right for you.

- TEGRETOL, TEGRETOL CR and TEGRETOL Suspension pass into breastmilk. You should not breastfeed while you are taking TEGRETOL, TEGRETOL CR or TEGRETOL Suspension as they can cause serious side effects in your baby.
- **Male Patients:**
  - TEGRETOL, TEGRETOL CR and TEGRETOL Suspension may affect your fertility. It may also cause abnormal sperm production. This means it may be difficult for you to father a child. Talk to your healthcare professional if you have questions about this.

**Driving and Using Machines:** TEGRETOL, TEGRETOL CR and TEGRETOL Suspension can cause dizziness, drowsiness, sleepiness, blurred or double vision and can affect your muscular coordination and your alertness. Do not drive or use machines until you know how you respond to TEGRETOL, TEGRETOL CR or TEGRETOL Suspension.

**Blood Tests:** TEGRETOL, TEGRETOL CR and TEGRETOL Suspension can cause abnormal blood test results. Your healthcare professional will perform blood tests before you start taking TEGRETOL, TEGRETOL CR or TEGRETOL Suspension and regularly during your treatment, and will interpret the results.

**Tell your healthcare professional about all the medicines you take, including any drugs, vitamins, minerals, natural supplements or alternative medicines.**

This is particularly important for TEGRETOL, TEGRETOL CR and TEGRETOL Suspension, since many other medicines interact with them. You may need a change in your dose or, sometimes, to stop one of these other medicines.

#### **Serious Drug Interactions**

- TEGRETOL, TEGRETOL CR and TEGRETOL Suspension must not be taken within 14 days of monoamine oxidase (MAO) inhibitors, a special group of antidepressant medicines.
- TEGRETOL, TEGRETOL CR and TEGRETOL Suspension must not be taken with itraconazole and voriconazole, medicines used to treat fungal infections.

**The following may interact with TEGRETOL, TEGRETOL CR and TEGRETOL Suspension:**

- Medicines used to treat pain and reduce inflammation such as; buprenorphine, methadone, paracetamol (acetaminophen), phenazone (antipyrine), tramadol, dextropropoxyphene, ibuprofen
- Medicines used to treat bacterial infections such as; doxycycline, rifabutin, erythromycin, troleandomycin, josamycin, clarithromycin, telithromycin, ciprofloxacin



- Medicines used to prevent blood clots such as; warfarin, phenprocoumon, dicoumarol, acenocoumarol, rivaroxaban, dabigatran, apixaban, edoxaban, ticlopidine
- Antidepressants such as; bupropion, citalopram, mianserin, nefazodone, sertraline, trazodone, tricyclic antidepressants (e.g. imipramine, amitriptyline, nortriptyline, clomipramine), desipramine, fluoxetine, fluvoxamine, paroxetine, viloxazine
- Antihistamines used to treat allergies such as; terfenadine, loratadine
- Medicines used to prevent seizures such as; oxcarbazepine, clobazam, clonazepam, ethosuximide, methsuximide, primidone, valproic acid, felbamate, lamotrigine, eslicarbazepine, zonisamide tiagabine, topiramate, phenytoin, stiripentol, vigabatrin, valpromide, phenobarbital, phenoximide, progabide, levetiracetam
- Medicines used to treat fungal infections such as; itraconazole, ketoconazole, fluconazole, voriconazole, caspofungin
- Medicines used to treat parasites such as; praziquantel, albendazole
- Medicines used to treat tuberculosis infection such as; isoniazid, rifampicin
- Medicines used to treat cancer such as; imatinib, irinotecan, gefitinib, cyclophosphamide, lapatinib, temsirolimus, cisplatin, doxorubicin
- Medicines used to treat mental health problems such as; clozapine, haloperidol, bromperidol, olanzapine, quetiapine, risperidone, ziprasidone, aripiprazole, paliperidone, loxapine, lithium, metoclopramide
- Medicines used to treat HIV infection and AIDS such as; indinavir, ritonavir, saquinavir, delavirdine
- Medicines used to treat anxiety such as; alprazolam, midazolam
- Medicines used to treat heart problems such as; felodipine, digoxin, disopyramide, quinidine, propranolol, simvastatin, atorvastatin, lovastatin, ivabradine, verapamil, diltiazem
- Medicines used to treat stomach problems such as; cimetidine, omeprazole
- Medicines used to treat inflammation called corticosteroids such as; prednisolone, dexamethasone
- Medicines used to suppress the immune system such as; cyclosporin, everolimus, tacrolimus, sirolimus
- Medicines used to treat breathing problems such as; theophylline, aminophylline
- Diuretics or “water pills” such as; hydrochlorothiazide, furosemide
- Muscle relaxants such as; oxybutynin, dantrolene, pancuronium
- Acetazolamide, a medicine used to treat glaucoma
- Aprepitant, a medicine used to prevent nausea and vomiting
- Danazol, a medicine used to treat endometriosis and other conditions
- Isotretinoin, a medicine used to treat skin conditions such as acne
- Levothyroxine, a medicines used to treat thyroid problems
- Tadalafil, a medicine used to treat erectile dysfunction
- Hormonal birth control including estrogens and progestones
- St. John’s wort, an herbal medicine used to treat depression
- Vitamin B-3 such as; nicotinamide, niacinamide

- Avoid alcohol consumption when taking TEGRETOL, TEGRETOL CR and TEGRETOL Suspension.
- Do not drink grapefruit juice or eat grapefruit since this can increase the effect of TEGRETOL, TEGRETOL CR and TEGRETOL Suspension. Other juices, like orange juice or apple juice, do not have this effect.

**How to take TEGRETOL, TEGRETOL CR and TEGRETOL Suspension:**

- Always take TEGRETOL, TEGRETOL CR and TEGRETOL Suspension exactly as your healthcare professional has told you to. Your healthcare professional will decide on the dose that is right for you. Never increase or decrease your dose without talking to your healthcare professional.
- Do not stop taking TEGRETOL, TEGRETOL CR or TEGRETOL Suspension without talking to your healthcare professional. Your healthcare professional will tell you if and when you can stop taking this medicine.
- TEGRETOL, TEGRETOL CR and TEGRETOL Suspension should be taken in 2-4 divided doses daily, with meals whenever possible.
- Shake TEGRETOL Suspension well before you take it or else you may not receive the correct dose.
- TEGRETOL CR tablets should be swallowed whole with a little liquid during or after a meal. Do not crush or chew TEGRETOL CR tablets.

**Usual dose:**

**Epilepsy:**

***Adults and Children Over 12 Years of Age:***

Initial dose: 100 to 200 mg once or twice a day.

Usual dose: 800 to 1200 mg daily in divided doses.

***Children 6-12 Years of Age***

Initial dose: 100 mg a day in 2 to 4 divided doses.

The dose will be increased gradually by your healthcare professional until the right dose is found.

**Trigeminal Neuralgia:**

***Adults:***

Initial dose: 100 mg twice a day.

Usual dose: 200 to 800 mg daily in divided doses.

Maximum dose: 1200 mg a day in divided doses.

**Mania and Bipolar Disorders:**

***Adults:***

Initial dose: 200 to 400 mg daily in divided doses.

Usual dose: 400 to 1200 mg daily in divided doses.

Maximum dose: 1600 mg a day in divided doses.

**Overdose:**

If you think you, or a person you are caring for, have taken too much TEGRETOL, TEGRETOL CR or TEGRETOL Suspension, contact a healthcare professional, hospital emergency department, or regional poison control centre immediately, even if there are no symptoms.

**Missed Dose:**

If you miss a dose, take it as soon as you remember. However, if it is almost time for the next dose, skip the missed dose and return to your regular dosing schedule. Do not take a double dose to make up for the forgotten dose.

**What are possible side effects from using TEGRETOL, TEGRETOL CR and TEGRETOL Suspension?**

These are not all the possible side effects you may have when taking TEGRETOL, TEGRETOL CR or TEGRETOL Suspension. If you experience any side effects not listed here, tell your healthcare professional.

Side effects may include:

- purple or reddish-purple bumps that may be itchy
- trembling, uncontrolled body movements, muscle spasm, loss of muscle coordination, weakness
- agitation or hostility (especially in the elderly), depression with restlessness, nervousness or other mood or mental changes, changes in behaviour, confusion, headache, memory loss
- blurred vision, double vision, itching with redness and swelling of the eye (conjunctivitis), uncontrolled eye movements
- difficulty speaking or slurred speech, taste disturbances, dry mouth, red and sore tongue, mouth sores
- ringing or other unexplained sounds in the ears, decreased hearing
- numbness, tingling in hands and feet
- unusual secretion of breast milk, breast enlargement in men, sexual disturbances (erectile dysfunction), male infertility
- increased sensitivity of the skin to sun, changes in skin colouring, acne, increased sweating
- reactivation of herpes virus infection (can be serious when the immune system is depressed)

- complete loss of the nails, loss of hair, excessive body and facial hair
- vomiting, nausea, loss of appetite, constipation, diarrhea, abdominal pain
- dizziness, sleepiness, unsteadiness, drowsiness, fatigue
- weight gain
- aching joints or muscles
- experience a fall due to dizziness, drowsiness, decrease in blood pressure, confusion

<b>Serious side effects and what to do about them</b>			
<b>Symptom / effect</b>	<b>Talk to your healthcare professional</b>		<b>Stop taking drug and get immediate medical help</b>
	<b>Only if severe</b>	<b>In all cases</b>	
<b>VERY COMMON</b>			
<b>Decreased White Blood Cells:</b> fever, sore throat, rash, ulcers in the mouth, swollen glands, or more easily getting infections.	√		
<b>Suicidal Thoughts or Actions:</b> thoughts, plans and actions taken for the purpose of killing or harming yourself.		√	
<b>COMMON</b>			
<b>Edema:</b> swelling of the ankles, feet or lower legs.	√		
<b>RARE</b>			
<b>Systemic Lupus Erythematosus:</b> red blotchy rash mainly on the face which may be accompanied by fatigue, fever, nausea, loss of appetite.	√		
<b>Hallucination:</b> see or hear things that are not there.	√		
<b>High Blood Pressure or Low Blood Pressure:</b> dizziness, fainting, light-headedness.	√		
<b>VERY RARE</b>			
<b>Glaucoma:</b> pressure/pain in the eye.			√
<b>Thrombophlebitis:</b> swelling and redness along a vein which is		√	

Serious side effects and what to do about them			
Symptom / effect	Talk to your healthcare professional		Stop taking drug and get immediate medical help
	Only if severe	In all cases	
extremely tender or painful when touched.			
<b>Angioedema and Severe Allergic Reactions:</b> swelling of the face, eyes, or tongue, difficulty swallowing, wheezing, hives and generalized itching, rash, fever, abdominal cramps, chest discomfort or tightness, difficulty breathing, unconsciousness.			√
<b>Serious Skin Reactions:</b> any combination of itchy skin rash, redness, blistering of the lips, eyes or mouth, skin peeling, accompanied by fever, chills, headache, cough, body aches or swollen lymph nodes, joint pain, enlargement of the liver and/or the spleen. Any problems related to the lungs, kidneys, pancreas, heart, bone marrow, thymus, and colon.			√
<b>Liver Problems:</b> yellowing of the skin or eyes, dark urine, abdominal pain, nausea, vomiting, loss of appetite.		√	
<b>Meningitis:</b> fever, nausea, vomiting, headache, stiff neck and extreme sensitivity to bright light.			√
<b>Pancreatitis (inflammation of the pancreas):</b> severe upper abdominal pain, vomiting, loss of appetite.	√		
<b>Kidney Problems:</b> severely decreased urine output, blood in the urine, frequent urination.	√		

Serious side effects and what to do about them			
Symptom / effect	Talk to your healthcare professional		Stop taking drug and get immediate medical help
	Only if severe	In all cases	
<b>Porphyria:</b> darkening of urine, severe abdominal pain, excessive sweating, vomiting, anxiety.		√	
<b>Lack of All Blood Cells (bone marrow depression):</b> tiredness, headache, being short of breath when exercising, dizziness, looking pale, frequent infections leading to fever, chills, sore throat or mouth ulcers, bleeding or bruising more easily than normal, nose bleeds.	√		
<b>Neuroleptic Malignant Syndrome:</b> muscular stiffness, high fever, altered consciousness, high blood pressure, excessive salivation.			√
<b>Heart Problems:</b> irregular heartbeat, chest pain, fast or unusually slow heartbeat, trouble breathing.	√		
<b>Thromboembolism (blood clot):</b> swelling, pain and redness in an arm or a leg that can be warm to touch. You may develop sudden chest pain, difficulty breathing and heart palpitations.			√
<b>Circulatory Collapse:</b> the body is unable to circulate blood to the organs. This is very serious and can lead to death.			√
Disturbed consciousness, fainting.		√	
<b>Hyponatremia (low sodium in the blood):</b> lethargy, confusion, muscular twitching or	√		

Serious side effects and what to do about them			
Symptom / effect	Talk to your healthcare professional		Stop taking drug and get immediate medical help
	Only if severe	In all cases	
significant worsening of convulsions.			
<b>UNKNOWN</b>			
<b>Inflammation of the colon:</b> diarrhea, abdominal pain, fever.		√	

If you have a troublesome symptom or side effect that is not listed here or becomes bad enough to interfere with your daily activities, tell your healthcare professional.

### Reporting Side Effects

You can report any suspected side effects associated with the use of health products to Health Canada by:

- Visiting the Web page on Adverse Reaction Reporting (<https://www.canada.ca/en/health-canada/services/drugs-health-products/medeffect-canada.html>) for information on how to report online, by mail or by fax; or
- Calling toll-free at 1-866-234-2345.

*NOTE: Contact your health professional if you need information about how to manage your side effects. The Canada Vigilance Program does not provide medical advice.*

### Storage:

**TEGRETOL:** Store at 15-25°C, protect from humidity.

**TEGRETOL CR:** Store below 25°C, protect from humidity.

**TEGRETOL Suspension:** Store below 30°C, protect from humidity and light.

Keep TEGRETOL, TEGRETOL CR and TEGRETOL Suspension out of reach and sight of children.

### If you want more information about TEGRETOL, TEGRETOL CR and TEGRETOL Suspension:

- Talk to your healthcare professional
- Find the full product monograph that is prepared for healthcare professionals and includes this Patient Medication Information by visiting the Health Canada website: (<https://www.canada.ca/en/health-canada/services/drugs-health-products/drug->

[products/drug-product-database.html](https://www.novartis.ca/products/drug-product-database.html); the manufacturer's website [www.novartis.ca](http://www.novartis.ca), or by calling 1-800-363-8883.

This leaflet was prepared by Novartis Pharmaceuticals Canada Inc.

Last Revised 27 May 2021

TEGRETOL is a registered trademark.